



Old Madras Road, Bengaluru

# EUPHORA



ETHEREAL  
AMBIENCE

UNIQUE  
LOCATION

PERSONAL  
SPACE

HARMONY  
IN NATURE

OPENNESS OF  
ACTIVE LIFESTYLE

REVELRY  
OF CLUB LIFE

ADVANCED  
FACILITIES

## DEVELOPER'S NOTE

---

"Blissful living" is the essence of all the dimensions of "Euphora."

Standing tall on the iconic Old Madras Road, it offers seamless connectivity to the surrounding vibrant city life to offer you unmatched conveniences and also gives you quick access to the most sought-after getaways to unwind.

Blissful homes weave tales of personal bonding in thoughtfully designed and curated personal spaces surrounded by an abundance of open and green spaces with ample lifestyle amenities for you to relax, rejuvenate, and cherish priceless moments with your loved ones.

Come be a part of Euphoric Living, where handcrafted luxury homes and vibrant lifestyle spaces unfold a new era of ethereal life.





Step into your

# Euphoric

world and feel the bliss.









3 Towers

G+18 Floors

2, 3 & 4 BHK

Penthouse

80% Open Space

Indulge in

**Ethereal  
Luxury**



# Master plan



01. MAIN ENTRANCE  
02. SECURITY KIOSK  
03. BUS WAITING BAY  
04. DRIVEWAY  
05. JOGGING TRACK  
06. DROP OFF ISLAND

07. KID'S PLAY AREA  
08. TOT-LOT  
09. SKATING RING  
10. LEISURE LAWN  
11. CRICKET NET  
12. BASKETBALL COURT

13. OPEN AIR THEATRE  
14. PARTY LAWN  
15. GAZEBO  
16. SWIMMING POOL  
17. OUTDOOR GYM  
18. ELDER'S PAVILION

19. ENTRY/EXIT RAMP  
20. SURFACE PARKING  
21. TRANSFORMER YARD  
22. D G YARD  
23. OWC  
24. SEATING GALLERY

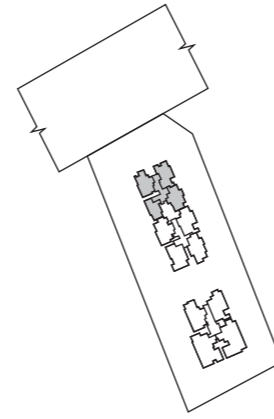
25. NANNY'S CORNER  
26. PLAY LAWN  
27. PALM COURT  
28. PARTY BARBEQUE DECK  
29. POOL DECK  
30. MEDITATION DECK/PODS

31. ELDER'S SEATING NICHE  
32. CYCLE PARKING BAYS  
33. YOGA DECK  
34. YOGA LAWN  
35. PET'S PARK  
36. GAS BANK



# TOWER-A

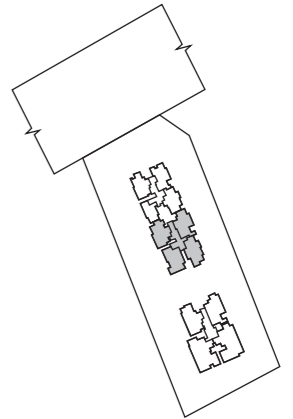
TYPICAL FLOOR PLAN  
1ST - 18TH FLOOR



KEY PLAN

# TOWER-B

TYPICAL FLOOR PLAN  
1ST - 16TH FLOOR



KEY PLAN

**A-101-1801**  
3BHK  
1518 Sq.Ft.



**A-102-1802**  
3BHK  
1541 Sq.Ft.



**A-104-1804**  
2BHK  
1131 Sq.Ft.



**A-103-1803**  
3BHK  
1500 Sq.Ft.



**B-101-1601**  
3BHK(C)  
1772 Sq.Ft.



**A-104-1604**  
3BHK  
1850 Sq.Ft.



**B-102-1602**  
3BHK(C)  
1693 Sq.Ft.

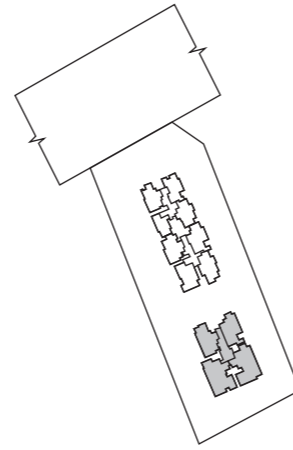


**A-103-1603**  
3BHK(C)  
1777 Sq.Ft.



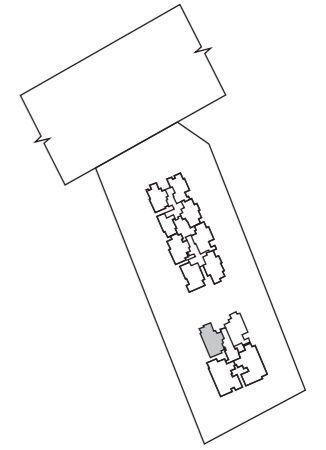


**TOWER-C**  
TYPICAL FLOOR PLAN  
1ST - 16TH FLOOR



KEY PLAN

**PENT HOUSE FLOOR PLAN**



KEY PLAN

**C-101-1601**  
3BHK(L)  
1927 Sq.Ft.



**C-102-1602**  
3BHK(L)  
1925 Sq.Ft.



**C-104-1604**  
4BHK  
2982 Sq.Ft.



**C-103-1603**  
4BHK  
2856 Sq.Ft.



**C-1701**  
PENTHOUSE  
SALEABLE AREA-3501 Sq. Ft.





# Personal Spaces

created to satiate  
your desire for blissful living.

Luxury doesn't shout; it whispers.  
It doesn't impose, nor can it be forced.  
Here, luxury has flowed in grace,  
in its own harmonious comfort,  
and echoes all throughout your personal space.





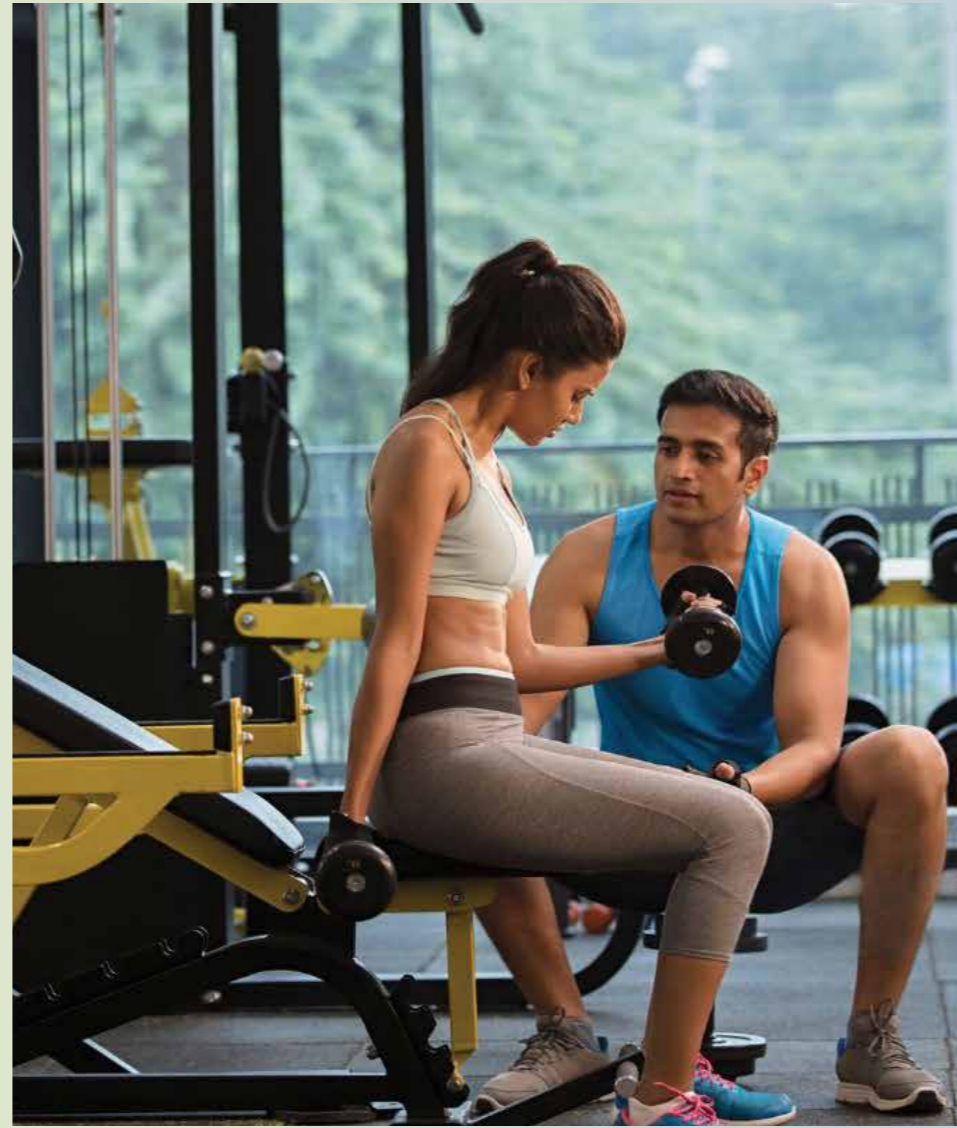


Your Outdoor Oasis,  
Where Recreation Meets Relaxation.





Unwind in Style: Luxurious Amenities Designed for Pure Bliss. Each of these amenities is designed to provide a sanctuary of relaxation, comfort, and indulgence, ensuring a memorable and blissful experience.







# Harmony

of being one with nature

As you lay your eyes upon verdant greens,  
it soothes your soul and fills you with bliss.

An essence that smells familiar to childhood.

An air of purity lingers; it feels and breathes fresh.





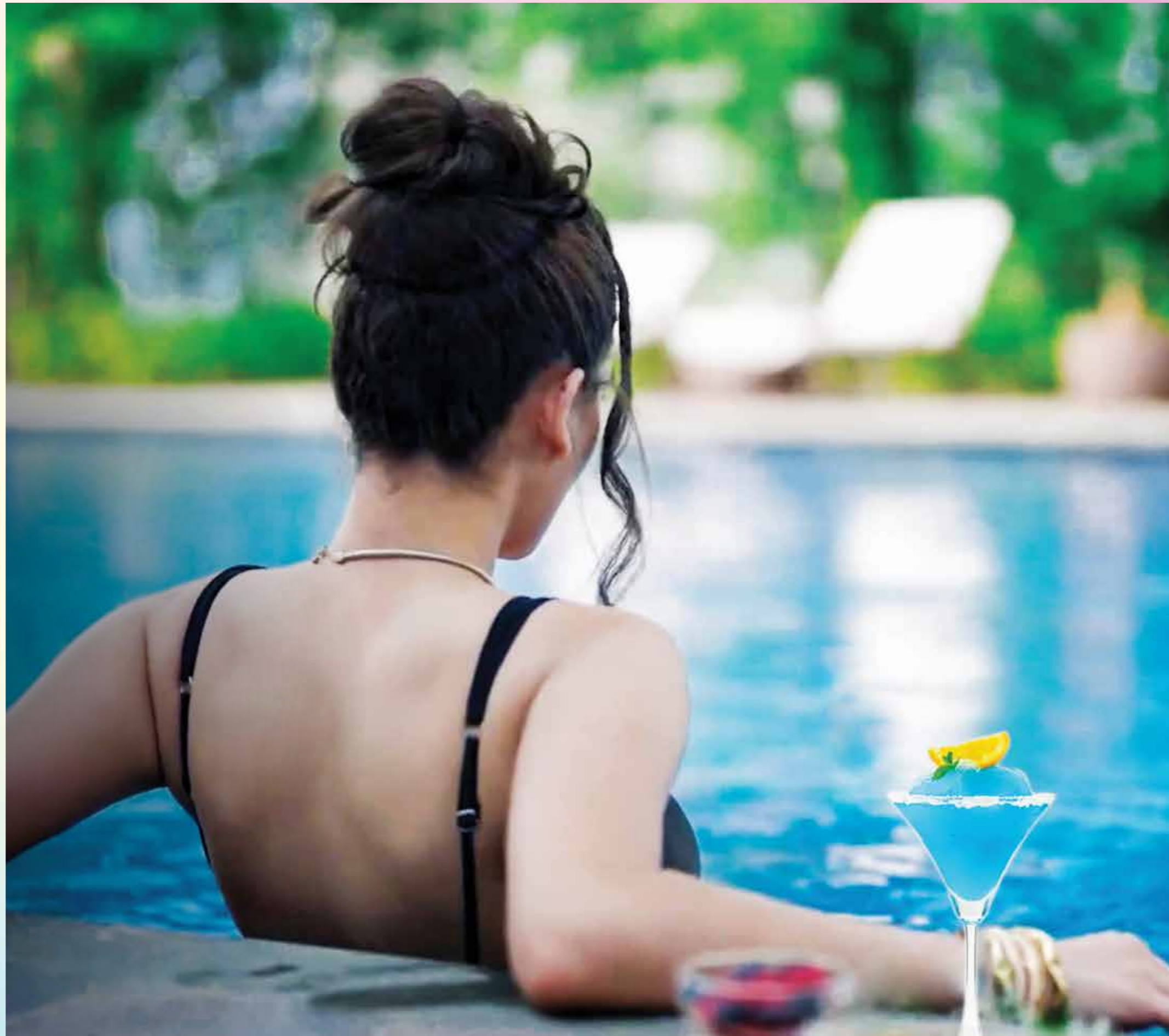
The bliss of high-spirited adventures  
is found at the kid's play area.



# Revelry

that makes your grandest  
celebrations blissful

Rejoice in the unending aura of Euphora,  
where celebrations are never-ending,  
and every moment is spent in bliss.  
You've known it exists, and now you can feel it  
every time you indulge amid the club facilities.







# Specification

## STRUCTURE

- Seismic Zone II RCC wall structure using pre engineered Aluminum formwork

## APARTMENT FLOORING & DADOING

- Premium Quality Vitrified Tiles flooring in Foyer, Living, Dining, Kitchen and Bedrooms
- Laminated Flooring in Master Bedrooms
- Premium Quality Antiskid tile flooring in Utility / Toilets / Balcony
- Premium Quality Glazed Tiles dado in all toilets

## DOORS & WINDOWS

- Premium quality Laminated Door with Premium digital lock for Main Door
- Premium quality Mulded / Laminated Door with Premium quality hardware for Bedroom and Toilets
- Premium Quality UPVC / Aluminum sliding door with mosquito Mesh shutter for Balcony
- Premium Quality UPVC / Aluminum Window with mosquito Mesh
- Aluminum UPVC frame with glass blinds for Ventilators in Toilets

## TOILETS

- Premium quality Chrome Plated fittings
- Premium quality Wall mounted EWC's with concealed tank & Wash Basin
- Provision for Exhaust fan & Geyser

## BALCONY

- Premium quality Glass railing with SS Handrail for Balcony

## PAINTING

- Premium quality Emulsion Paint for internal walls & Ceiling
- Premium quality Exterior Emulsion Paint for External walls
- Premium quality Synthetic Enamel paint for metal surface

## ELECTRICAL

- Premium quality Concealed Copper wiring with Circuit breakers
- Premium quality Modular Switches
- Conducting Provision for Air Conditioning

## STAIRCASE & LOBBY

- Premium quality vitrified flooring for Lobby
- Granite/ Step tile for Staircase
- MS Handrail for staircase
- High Speed Premium Elevators of suitable size and capacity

## COMMON AMENITIES

- CCTV at major entry and Exit points
- Generator will be provided for common areas
- Piped gas line system to each flat from Gas bank
- Fire fighting works as per safety norms
- STP, WTP, UG SUMP & OHT will be provided as per norms of required capacity
- Signage's for all common Amenities Luxury Designer Entrance Lobby.
- Fully Functional Lifestyle Club





# Major landmarks in and around your vicinity

## HEALTH CARE

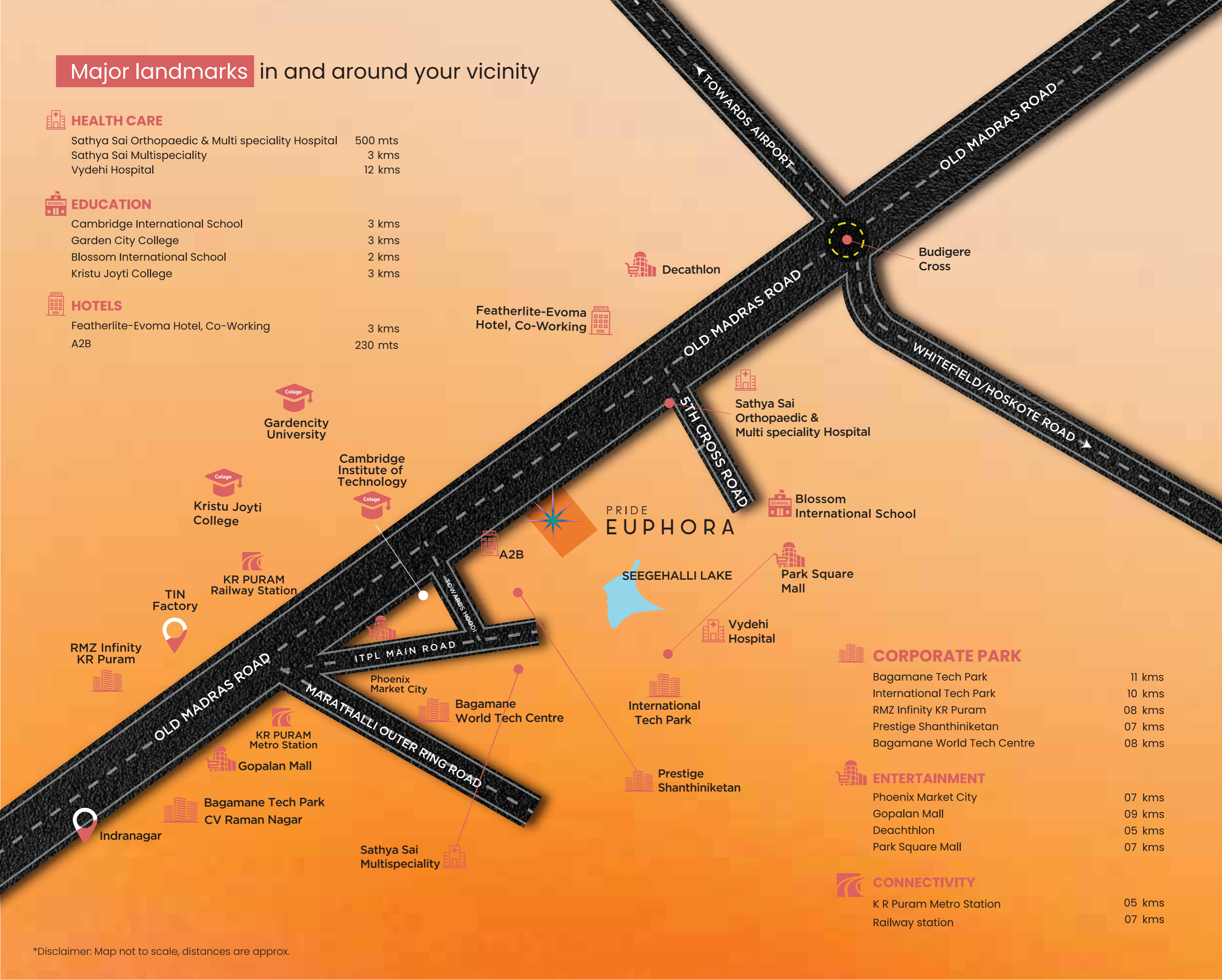
Sathya Sai Orthopaedic & Multi speciality Hospital	500 mts
Sathya Sai Multispeciality	3 kms
Vydehi Hospital	12 kms

## EDUCATION

Cambridge International School	3 kms
Garden City College	3 kms
Blossom International School	2 kms
Kristu Joyti College	3 kms

## HOTELS

Featherlite-Evoma Hotel, Co-Working	3 kms
A2B	230 mts



## CORPORATE PARK

Bagamane Tech Park	11 kms
International Tech Park	10 kms
RMZ Infinity KR Puram	08 kms
Prestige Shanthiniketan	07 kms
Bagamane World Tech Centre	08 kms

## ENTERTAINMENT

Phoenix Market City	07 kms
Gopalan Mall	09 kms
Decathlon	05 kms
Park Square Mall	07 kms

## CONNECTIVITY

K R Puram Metro Station	05 kms
Railway station	07 kms

\*Disclaimer: Map not to scale, distances are approx.



# Building Tomorrow. Today



PRIDE PAVILION



PRIDE PICASSA



PRIDE ENCHANTA



PRIDE CROSSWINDS VILLAS P-II



PRIDE VATIKA ROW HOUSE



PRIDE HULKUL



PRIDE SPRINGFIELDS



PRIDE CROSSWINDS VILLAS P-I



PRIDE CROSSWINDS VILLA PLOTS



PRIDE ELITE



PRIDE PRISTINE



PRIDE PEGASUS



PRIDE QUADRA



PRIDE VATIKA PHASE-II



PRIDE SUNRISE PHASE-II



PRIDE ALTIUS



PRIDE GATEWAY




PRIDE ROLLING HILLS



The Pride Group has been a leader in developing state-of-the-art residential and commercial projects, having been consistently transforming cityscapes across Bangalore, Pune, and Mumbai for three decades.

Bold contemporary designs, the highest attention to detail, excellent engineering standards, and an uncompromised focus on ethics have enabled the Group to earn the distinction of being an innovative and reliable development firm. The Group has also forayed into the luxury hospitality segment with its extensive chain of the Pride Group of Hotels, setting new milestones in hospitality standards in the process. We are committed to excellence in design, the highest standard of construction, and the development of residential and commercial spaces for urban Indian citizens. Our sights are set on the future with a simple motto: **Building Tomorrow. Today.**

 **30+**  
LANDMARKS

 **150000+**  
HAPPY RESIDENTS

 **35+ MILLION**  
SQ. FT. DEVELOPED AREA

 **18+**  
ONGOING PROJECTS

 **50+**  
WORLD CLASS AMENITIES



# Team



**Venkataramanan  
Associates**

## ARCHITECT

Founded in 1969, VA has pioneered architectural benchmarks that shape the way people live and work in urban India. Led by our understanding of the transformative power of design, our research-driven process has resulted in iconic buildings that have set the standard for their typologies in this country. VA started as an architectural practice that gained recognition for real estate and R&D projects. Over the years, we have gone from strength to strength, diversifying into multiple sectors and geographies, spanning complex research and development facilities, manufacturing units, and IT parks to public institutions and real estate, creating some of the benchmarks for their typologies in India.



## STRUCTURAL CONSULTANT

M/S. Design Ventures Engineering Consultants (I) Pvt. Ltd. consultancy services were conceptualized in March 2008 to provide value-added and reliable technical advisory roles and design consultancy services in the field of structural for various types of projects such as industrial, pharmaceutical, hospitality, IT & ITES, commercial, residential, etc.



HMN TECHCONSULTANTS PVT LTD.

## MEP CONSULTANT

HMN was established in 2002 by HMN Techconsultants to provide excellent consultancy in the fields of plumbing and sanitation, firefighting, and electrical and HVAC consulting. Our objective is to render quality, innovative, cost-effective, proven design, competitive services, and be committed to our clients. We at HMN understand the importance of establishing a good and long-lasting working relationship with the project team by providing state-of-the-art design, solutions, timely delivery, and integrated services well within the parameters of time and cost.



## LANDSCAPE CONSULTANT

MDS is a progressive landscape design and planning studio located in Bangalore. We pride ourselves on providing innovative, efficient, and cost-effective responses to contemporary landscape challenges. For us, landscape architecture is essentially an open-field operation. Acting as the nexus of planning, architecture, art, and ecological design. At the heart of each of these disciplines is the idea of building community, and that idea is the central focus of our practice.



## BRAND CONSULTANT

Bibhor Singhania and Banibrata Goswami have been working with the real estate pioneers across the nation, serving more than 100 clients and 250 real estate projects across West Bengal, Maharashtra, Chattisgarh, Assam, Bihar, Odisha, and many more states. Be the Bee is one of India's most promising advertising agencies, with a bunch of innovative ideators and strategic thinkers. We aim to serve the most creative as well as effective branding approaches that touch all the verticals of marketing and create a distinguished position with the help of outstanding aesthetic skills for each real estate project.





**Corporate Address:**

901, 9<sup>th</sup> Floor, Pride hulkul, 116, Lal Bagh Main Rd,  
Bengaluru - 560027.

**Site Address:**

Pride Euphora, Old Madras Road, Bhattarahalli Village,  
Bengaluru - 560049

T: 080 - 2222 2424 | [www.pridegroup.net](http://www.pridegroup.net)



**Disclaimer:** All the information available on or through this brochure is intended to provide general information and shall not be deemed to constitute any invitation, solicitation, offer or sale of any of our product offerings. The artist's impressions & stock images are not meant to be considered for final binding. The images of the surrounding neighborhood are digitally enhanced/ altered for the understanding of marketing perspective only. The Promoter reserves the right to add, alter or delete material from the brochure at any time and revise terms under the applicable law. Please verify all details & aspects of any proposed booking/acquisition of Apartments / units, directly with our authorised representatives. \*Terms & Conditions apply.

Pride Euphora RERA Registration No: PRM/KA/RERA/1251/446/PR/080824/006965 | For More Details Visit: [www.rera.karnataka.gov.in](http://www.rera.karnataka.gov.in)