



Artist's Impression

SPACIOUS HOMES FOR A BOUTIQUE LIFESTYLE

RERA Reg.No: PRM/KA/RERA/1250/303/PR/211007/004344 • Details available at www.rera.karnataka.gov.in

Goldspire
at
BRIGADE
ORCHARDS
Near KIADB, Devanahalli

135-ACRE

AWARD WINNING SMART TOWNSHIP.
READY Homes. READY Amenities.



Actual image from location.



READY TO MOVE-IN APARTMENTS
& SIGNATURE VILLAS



FULLY FUNCTIONAL
SIGNATURE CLUB RESORT



WORLD CLASS SPORTS
ARENA & STADIUM



THE SCHOOL OF
GLOBAL MINDS



OFFICE & RETAIL SPACE
AT THE ARCADE



5 MINUTES TO READYMADE
SOCIAL INFRASTRUCTURE



15 MINUTES TO
AEROSPACE PARK



20 MINUTES TO
INTERNATIONAL AIRPORT



30 MINUTES FROM
HEBBAL/BUDIGERE CROSS



DIRECT CONNECTION WITH
UPCOMING NATIONAL HIGHWAY

Boutique homes

AS UNIQUE AS YOU

Goldspire
at
BRIGADE
ORCHARDS

Exclusively for the reserved few

- ◆ *Limited edition 60 apartments in the project*
- ◆ *Spaciously designed homes*
- ◆ *Standalone tower with a vista view of landscaping and open areas*
- ◆ *Close to the entry of Brigade Orchards*
- ◆ *Designed by renowned architect, Sanjay Mohe (MindSpace)*
- ◆ *Membership of 5-Star Signature Club Resort with restaurant & bar*

Smart Home Features

- ◆ *Amazon Echo*
- ◆ *Smart switches for Lights & Fans*
- ◆ *Energy efficient bathrooms*
- ◆ *Gas leak detector in kitchen*
- ◆ *Touchless devices in elevators*
- ◆ *Fastag for boom barriers*
- ◆ *RFID cards for residents*
- ◆ *Water metering system for all units*
- ◆ *RO system in all units*
- ◆ *Smart lock in each unit*

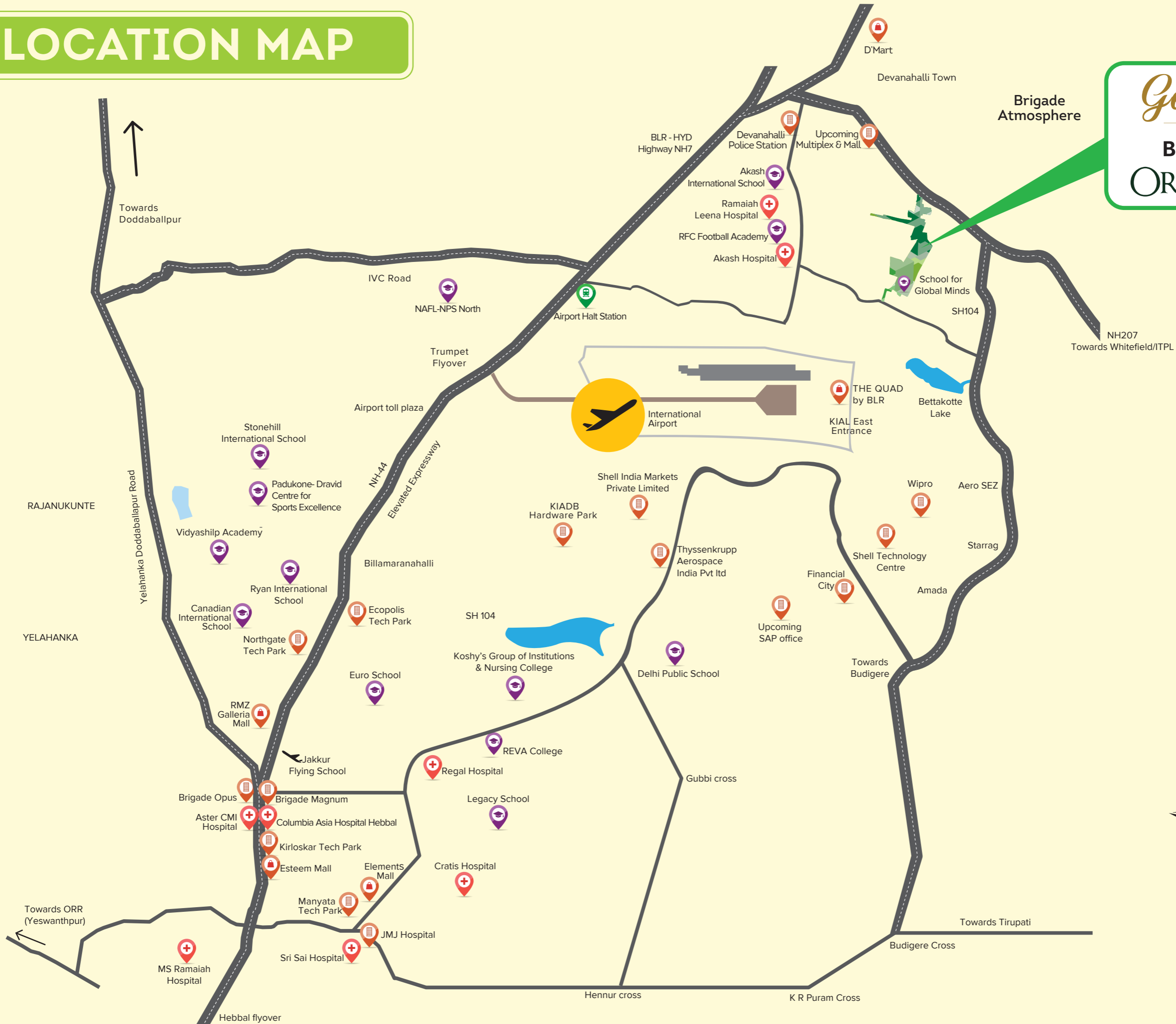
Boutique features inside home

- ◆ *Vitrified tiles with wood finish in all rooms*
- ◆ *Superior sanitary fittings – Kohler/ Grohe/ Duravit*
- ◆ *Accent wall in living room with texture finish*
- ◆ *Split Air Conditioner in each room and living area*
- ◆ *Marble Flooring in ground floor & lift lobby*

Luxurious amenities

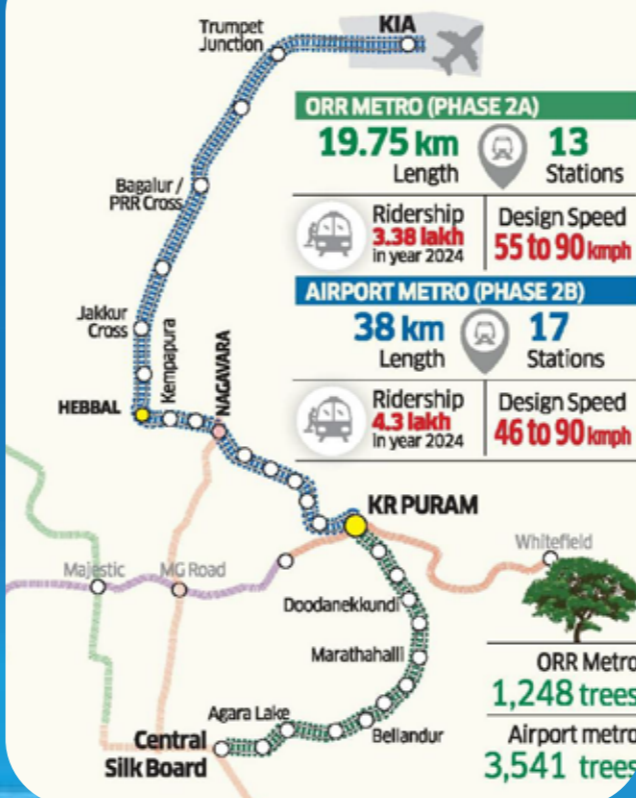
- ◆ *Multipurpose Party Area*
- ◆ *Indoor games*
- ◆ *Library*
- ◆ *Yoga Terrace*
- ◆ *Viewing Gallery*
- ◆ *Fitness Terrace*
- ◆ *Barbeque area on the terrace*

LOCATION MAP





METRO'S GREEN IMPACT





Get to work.

Whether you need to pop into the office for a quick catch up or your business needs you there 7 days a week, Bangalore's business hubs are a quick drive away.

WITHIN 20 MINUTES

- THE ARCADE AT BRIGADE ORCHARDS
- KEMPEGOWDA INTERNATIONAL AIRPORT
- KIADB AEROSPACE SEZ & HARDWARE PARK

WITHIN 30 MINUTES

- IFCI FINANCIAL CITY
- BOEING INTERNATIONAL CORPORATION
- WIPRO INFRASTRUCTURE ENGG.
- AMADA INDIA TECHNICAL CENTER
- STARRAG INDIA
- TEXAS INSTRUMENTS
- SHELL INDIA MARKETS
- DYNAMATIC
- AIRBUS
- THYSSENKRUPP
- CENTUM
- SAP LABS

WITHIN 45 MINUTES

- MANYATA BUSINESS PARK
- ECOPOLIS TECH PARK
- NORTHGATE OFFICE PARK
- KIRLOS KAR TECH PARK
- INFOSYS LIMITED



Fun and food, for every mood.

Shop till you drop, and watch all the latest films, and grab a bite to eat, and have a fun day out, when you want, where you want.

WITHIN 20 MINUTES

- SIGNATURE CLUB RESORT
- TAMARIND RESTAURANT
- THE ARCADE AT BRIGADE ORCHARDS
- RFC FOOTBALL ACADEMY
- SPORTS ARENA AT BRIGADE ORCHARDS
- THE QUAD BY BLR
- GOLF SHIRE CLUB

WITHIN 30 MINUTES

- NANDI HILLS
- CLARKS EXOTICA
- OLDE BANGALORE
- DECATHLON
- GARUDA MALL
- GALLERIA MALL
- ESTEEM MALL
- PHOENIX MALL Upcomming

WITHIN 45 MINUTES

- CHAIRMANS CLUB
- GOLDFINCH RETREAT
- ELEMENTS MALL
- SAHAKARANAGAR HIGH STREET
- YELAHANKA HIGH STREET
- THE LEELA PALACE



A world of possibilities is a short drive away.

Educate, empower and enable your loved ones to pursue their dreams, with the right opportunities at the right institute. And that too, close to home.

WITHIN 20 MINUTES

- | | | | | |
|--|-----------------------------|-------------------------------------|----------------------------|----------------|
| THE SCHOOL FOR GLOBAL MINDS (Brigade Orchards) | EURO SCHOOL | EUROKIDS PRE-SCHOOL | CARMEL ENGLISH SCHOOL | NAFL-NPS NORTH |
| ATAL BIHARI VAJAPAYEE RESIDENTIAL SCHOOL | SHANTHIKETHAN PUBLIC SCHOOL | STERLING ENGLISH RESIDENTIAL SCHOOL | AKASH INTERNATIONAL SCHOOL | |

WITHIN 30 MINUTES

- | | | | |
|-------------------------------|--------------------------------|------------------|--|
| DELHI PUBLIC SCHOOL | OXFORD ENGLISH SCHOOL | GITAM UNIVERSITY | PADUKONE-DRAVID CENTRE FOR SPORTS EXCELLENCE |
| CANADIAN INTERNATIONAL SCHOOL | STONEHILL INTERNATIONAL SCHOOL | | |

WITHIN 45 MINUTES

- | | | | | | |
|----------------|---------------------------|--------------------|--|--------------|---------------------------|
| VIBGYOR SCHOOL | RYAN INTERNATIONAL SCHOOL | VIDYASHILP ACADEMY | KOSHYS GROUP OF INSTITUTIONS & NURSING COLLEGE | REVA COLLEGE | MS COLLEGE OF ENGINEERING |
|----------------|---------------------------|--------------------|--|--------------|---------------------------|



One step closer to wellness.

Whether it's a routine check-up or an emergency, rest assured that the absolute best of healthcare is a short drive away.

WITHIN 10 MINUTES

- | | | |
|--------------------------|-----------------------------------|----------------|
| RAMAIAH LEENA HOSPITAL | MEDICAL CENTRE (Brigade Orchards) | AKASH HOSPITAL |
| SHRI SHIRDI SAI HOSPITAL | MANASA HOSPITAL | |

WITHIN 30-45 MINUTES

- | | | | |
|---------------------|------------------|------------------------|------------------|
| ASTER CMI HOSPITAL | DRISHTI EYE CARE | COLUMBIA ASIA HOSPITAL | RAMAIAH HOSPITAL |
| MOTHERHOOD HOSPITAL | REGAL HOSPITAL | CRATIS HOSPITAL | BAPTIST HOSPITAL |

WORK FROM CLOSE TO HOME

Business opportunities lie just around the corner, with the **KIADB** premises next door. **Brigade Orchards** is also a quick drive away from hardware manufacturing, biotech companies, pharma offices, textile businesses, and aerospace companies, so you can go wherever your work takes you.



The **KIADB SEZ** is the centre for over **40** operational companies including:



SHELL: Shell is a global group of energy and petrochemicals companies with around **94,000** employees across more than **70** countries and territories.



BOEING: The Boeing facility is currently under construction, spanning over **36** acres. Once completed, the project is expected to generate around **3,000** jobs.



AIRBUS: Dynamitic has inaugurated its new Airbus facility at KIADB Aerospace Park, with the intention to expand the manufacturing of A330. They have set up this type of state-of-the-art plant for the first time in India.



SAP LABS: SAP Labs R&D is geared up to move to a **40-acre campus**, double the size of the existing one in Whitefield.



TEXAS INSTRUMENTS: Texas Instruments is setting up their office to span over **15** acres. The company is expected to generate **2,000** employment opportunities.

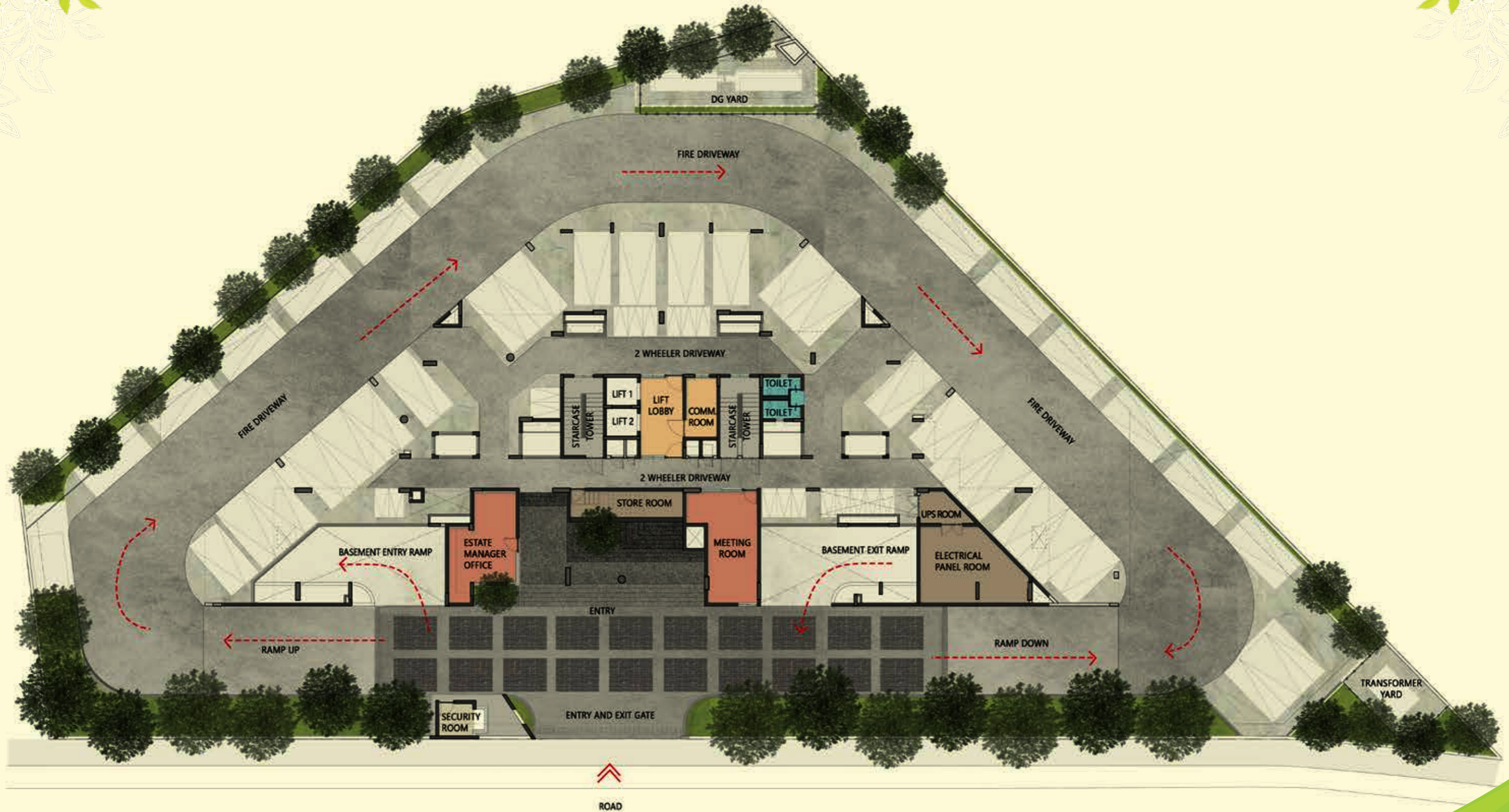


THYSSENKRUPP: The largest service providers of aerospace-grade raw materials like aluminum, steel, titanium, nickel, bronze & copper alloys, local and global logistics, supply chain management and tooling management, they are leaders in their domains.



CENTUM: Centum offers a broad range of products and services across different industry segments, right out of the Bengaluru office.

MASTER PLAN



GROUND FLOOR PLAN

The information depicted herein viz., master plans, floor plans, furniture layout, fittings, illustrations, specifications, designs, dimensions, rendered views, colours, amenities and facilities etc., are subject to change without notifications as may be required by the relevant authorities or the developer's architect, and cannot form part of an offer or contract. Whilst every care is taken in providing this information, the Developer cannot be held liable for variations. All illustrations and pictures are artist's impression only. The information are subject to variations, additions, deletions, substitutions and modifications as may be recommended by the company's architect and/or the relevant approving authorities. The Developer is wholly exempt from any liability on account of any claim in this regard. (1 square metre = 10.764 square feet). E & OE.

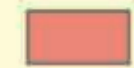
All dimensions and calculations are done in metric system (M/ Sq.m), and imperial system (Ft/ Sq.ft) shown is for reference only.

Goldspire
at
BRIGADE
ORCHARDS

FIRST FLOOR



FIRST FLOOR



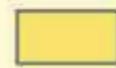
TYPE 1-T
2BHK



TYPE 1-B1
2BHK



TYPE 2-T
2BHK



TYPE 3-B1
2BHK



TYPE 4
1.5BHK



CORRIDOR



COMMON FACILITIES

The information depicted herein viz., master plans, floor plans, furniture layout, fittings, illustrations, specifications, designs, dimensions, rendered views, colours, amenities and facilities etc., are subject to change without notifications as may be required by the relevant authorities or the developer's architect, and cannot form part of an offer or contract. Whilst every care is taken in providing this information, the Developer cannot be held liable for variations. All illustrations and pictures are artist's impression only. The information are subject to variations, additions, deletions, substitutions and modifications as may be recommended by the company's architect and/or the relevant approving authorities. The Developer is wholly exempt from any liability on account of any claim in this regard. (1 square metre = 10.764 square feet). E & OE.

All dimensions and calculations are done in metric system (M/ Sq.m), and imperial system (Ft/ Sq.ft) shown is for reference only.

Goldspire
at
BRIGADE
ORCHARDS

SECOND FLOOR



- TYPE 1-A1**
2BHK
- TYPE 1-B2**
2BHK
- TYPE 2-B1**
2BHK
- TYPE 3-B1**
2BHK
- TYPE 4**
1.5BHK
- TYPE 5**
1.5BHK
- CORRIDOR**
- COMMON FACILITIES**

The information depicted herein viz., master plans, floor plans, furniture layout, fittings, illustrations, specifications, designs, dimensions, rendered views, colours, amenities and facilities etc., are subject to change without notifications as may be required by the relevant authorities or the developer's architect, and cannot form part of an offer or contract. Whilst every care is taken in providing this information, the Developer cannot be held liable for variations. All illustrations and pictures are artist's impression only. The information are subject to variations, additions, deletions, substitutions and modifications as may be recommended by the company's architect and/or the relevant approving authorities. The Developer is wholly exempt from any liability on account of any claim in this regard. (1 square metre = 10.764 square feet). E & OE.

All dimensions and calculations are done in metric system (M/ Sq.m), and imperial system (Ft/ Sq.ft) shown is for reference only.

Goldspire
 at
BRIGADE
ORCHARDS

THIRD FLOOR



THIRD FLOOR



TYPE 1-A2
2BHK



TYPE 1-B1
2BHK


TYPE 2-B2
2BHK


TYPE 3-B1
2BHK


TYPE 3-B3
2BHK


TYPE 5
1.5BHK


TYPE 6
1.5BHK


CORRIDOR


COMMON FACILITIES

The information depicted herein viz., master plans, floor plans, furniture layout, fittings, illustrations, specifications, designs, dimensions, rendered views, colours, amenities and facilities etc., are subject to change without notifications as may be required by the relevant authorities or the developer's architect, and cannot form part of an offer or contract. Whilst every care is taken in providing this information, the Developer cannot be held liable for variations. All illustrations and pictures are artist's impression only. The information are subject to variations, additions, deletions, substitutions and modifications as may be recommended by the company's architect and/or the relevant approving authorities. The Developer is wholly exempt from any liability on account of any claim in this regard. (1 square metre = 10.764 square feet). E & OE.

All dimensions and calculations are done in metric system (M/ Sq.m), and imperial system (Ft/ Sq.ft) shown is for reference only.

Goldspire
at
BRIGADE
ORCHARDS

FOURTH FLOOR



FOURTH FLOOR

- 
TYPE 1-B3
 2BHK
- 
TYPE 1-B4
 2BHK
- 
TYPE 2-B3
 2BHK
- 
TYPE 2-B4
 2BHK
- 
TYPE 3-B1
 2BHK
- 
TYPE 3-B2
 2BHK
- 
TYPE 4
 1.5BHK
- 
TYPE 5
 1.5BHK
- 
CORRIDOR
- 
COMMON FACILITIES

The information depicted herein viz., master plans, floor plans, furniture layout, fittings, illustrations, specifications, designs, dimensions, rendered views, colours, amenities and facilities etc., are subject to change without notifications as may be required by the relevant authorities or the developer's architect, and cannot form part of an offer or contract. Whilst every care is taken in providing this information, the Developer cannot be held liable for variations. All illustrations and pictures are artist's impression only. The information are subject to variations, additions, deletions, substitutions and modifications as may be recommended by the company's architect and/or the relevant approving authorities. The Developer is wholly exempt from any liability on account of any claim in this regard. (1 square metre = 10.764 square feet). E & OE.

All dimensions and calculations are done in metric system (M/ Sq.m), and imperial system (Ft/ Sq.ft) shown is for reference only.

Goldspire
 at
BRIGADE
ORCHARDS

FIFTH FLOOR



FIFTH FLOOR

 TYPE 1-B2
2BHK


 TYPE 1-B5
2BHK

 TYPE 2-B5
2BHK

 TYPE 2-B6
2BHK

 TYPE 3-B1
2BHK

 TYPE 3-B2
2BHK

 TYPE 4
1.5BHK

 CORRIDOR

 COMMON FACILITIES

The information depicted herein viz., master plans, floor plans, furniture layout, fittings, illustrations, specifications, designs, dimensions, rendered views, colours, amenities and facilities etc., are subject to change without notifications as may be required by the relevant authorities or the developer's architect, and cannot form part of an offer or contract. Whilst every care is taken in providing this information, the Developer cannot be held liable for variations. All illustrations and pictures are artist's impression only. The information are subject to variations, additions, deletions, substitutions and modifications as may be recommended by the company's architect and/or the relevant approving authorities. The Developer is wholly exempt from any liability on account of any claim in this regard. (1 square metre = 10.764 square feet). E & OE.

All dimensions and calculations are done in metric system (M/ Sq.m), and imperial system (Ft/ Sq.ft) shown is for reference only.

Goldspire
at
BRIGADE
ORCHARDS

SIXTH FLOOR



SIXTH FLOOR

- 
TYPE 1-B3
 2BHK
- 
TYPE 1-B4
 2BHK
- 
TYPE 2-B3
 2BHK
- 
TYPE 2-B1
 2BHK
- 
TYPE 3-B1
 2BHK
- 
TYPE 3-B2
 2BHK
- 
TYPE 4
 1.5BHK
- 
TYPE 5
 1.5BHK
- 
CORRIDOR
- 
COMMON FACILITIES

The information depicted herein viz., master plans, floor plans, furniture layout, fittings, illustrations, specifications, designs, dimensions, rendered views, colours, amenities and facilities etc., are subject to change without notifications as may be required by the relevant authorities or the developer's architect, and cannot form part of an offer or contract. Whilst every care is taken in providing this information, the Developer cannot be held liable for variations. All illustrations and pictures are artist's impression only. The information are subject to variations, additions, deletions, substitutions and modifications as may be recommended by the company's architect and/or the relevant approving authorities. The Developer is wholly exempt from any liability on account of any claim in this regard. (1 square metre = 10.764 square feet). E & OE.

All dimensions and calculations are done in metric system (M/ Sq.m), and imperial system (Ft/ Sq.ft) shown is for reference only.

Goldspire
 at
BRIGADE
ORCHARDS

SEVENTH FLOOR



SEVENTH FLOOR


TYPE 1-B5
2BHK


TYPE 1-B1
2BHK


TYPE 2-B7
2BHK


TYPE 2-B2
2BHK


TYPE 3-B1
2BHK


TYPE 3-B2
2BHK


TYPE 5
1.5BHK


CORRIDOR


COMMON FACILITIES

The information depicted herein viz., master plans, floor plans, furniture layout, fittings, illustrations, specifications, designs, dimensions, rendered views, colours, amenities and facilities etc., are subject to change without notifications as may be required by the relevant authorities or the developer's architect, and cannot form part of an offer or contract. Whilst every care is taken in providing this information, the Developer cannot be held liable for variations. All illustrations and pictures are artist's impression only. The information are subject to variations, additions, deletions, substitutions and modifications as may be recommended by the company's architect and/or the relevant approving authorities. The Developer is wholly exempt from any liability on account of any claim in this regard. (1 square metre = 10.764 square feet). E & OE.

All dimensions and calculations are done in metric system (M/ Sq.m), and imperial system (Ft/ Sq.ft) shown is for reference only.

Goldspire
at
BRIGADE
ORCHARDS

EIGHTH FLOOR



EIGHTH FLOOR

- 
TYPE 1-B6
 2BHK
- 
TYPE 2-B8
 2BHK
- 
TYPE 2-B9
 2BHK
- 
TYPE 3-B1
 2BHK
- 
TYPE 7
 1BHK
- 
TYPE 3-B2
 2BHK
- 
TYPE 4
 1.5BHK
- 
TYPE 5
 1.5BHK
- 
CORRIDOR
- 
COMMON FACILITIES

The information depicted herein viz., master plans, floor plans, furniture layout, fittings, illustrations, specifications, designs, dimensions, rendered views, colours, amenities and facilities etc., are subject to change without notifications as may be required by the relevant authorities or the developer's architect, and cannot form part of an offer or contract. Whilst every care is taken in providing this information, the Developer cannot be held liable for variations. All illustrations and pictures are artist's impression only. The information are subject to variations, additions, deletions, substitutions and modifications as may be recommended by the company's architect and/or the relevant approving authorities. The Developer is wholly exempt from any liability on account of any claim in this regard. (1 square metre = 10.764 square feet). E & OE.

All dimensions and calculations are done in metric system (M/ Sq.m), and imperial system (Ft/ Sq.ft) shown is for reference only.

Goldspire
 at
BRIGADE
ORCHARDS



UNIT PLANS

1.5 Bedroom homes

85.03 Sq.m (915 Sq.ft.) - 91.97 Sq.m (990 Sq.ft.)



1.5
Bedroom
Homes

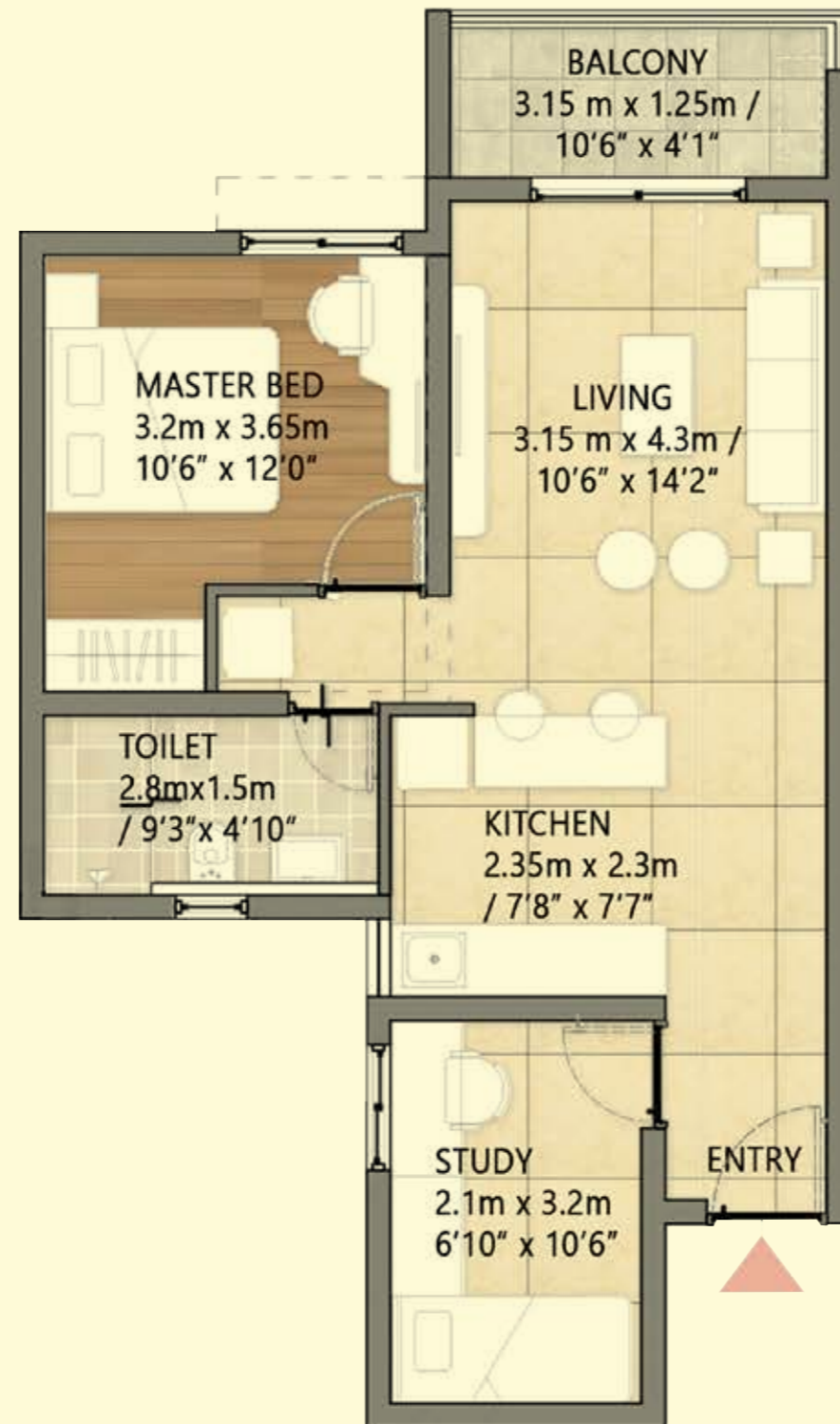




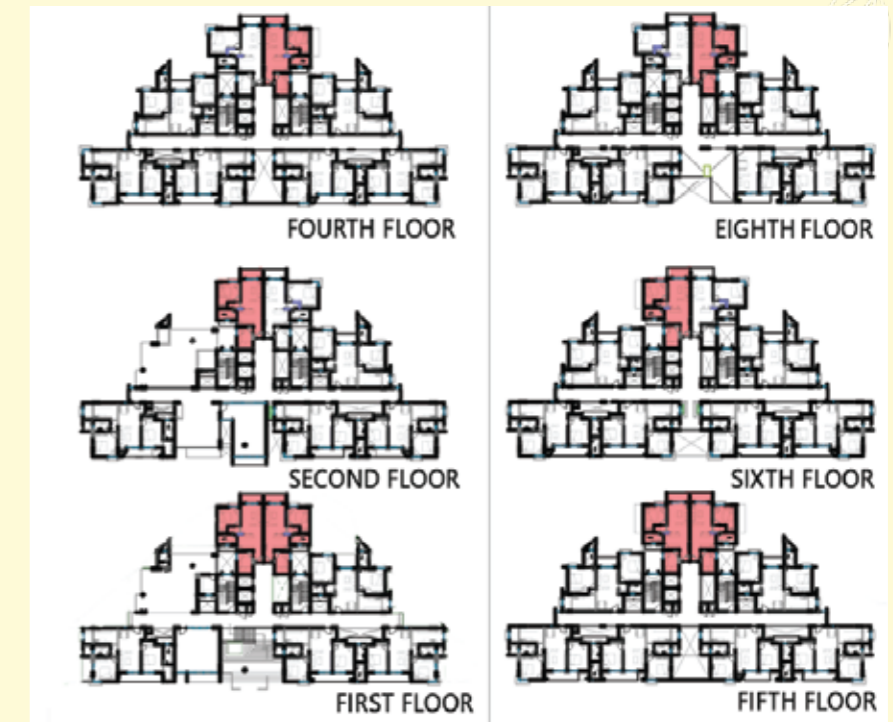
1.5
Bedroom
Homes



1.5 BHK UNIT (1 Bedroom + 1 Study + 1 Toilet)



KEY PLAN



SUPER BUILT-UP AREA

85.03 Sq.m (915 Sq.ft.)

UNIT CARPET AREA

49.12 Sq.m (528.72 Sq.ft.)

BALCONY CARPET AREA

3.93 sq.m (42.30 Sq.ft.)

The information depicted herein viz., master plans, floor plans, furniture layout, fittings, illustrations, specifications, designs, dimensions, rendered views, colours, amenities and facilities etc., are subject to change without notifications as may be required by the relevant authorities or the developer's architect, and cannot form part of an offer or contract. Whilst every care is taken in providing this information, the Developer cannot be held liable for variations. All illustrations and pictures are artist's impression only. The information are subject to variations, additions, deletions, substitutions and modifications as may be recommended by the company's architect and/or the relevant approving authorities. The Developer is wholly exempt from any liability on account of any claim in this regard. (1 square metre = 10.764 square feet). E & OE.

All dimensions and calculations are done in metric system (M/ Sq.m), and imperial system (Ft/ Sq.ft) shown is for reference only.

Goldspire
at
BRIGADE
ORCHARDS

1.5 BHK UNIT (1 Bedroom + 1 Study + 1 Toilet)

KEY PLAN



THIRD FLOOR



SUPER BUILT-UP AREA

85.33 Sq.m (918 Sq.ft.)

UNIT CARPET AREA

49.50 Sq.m (532.81 Sq.ft.)

BALCONY CARPET AREA

3.97 sq.m (42.73 Sq.ft.)

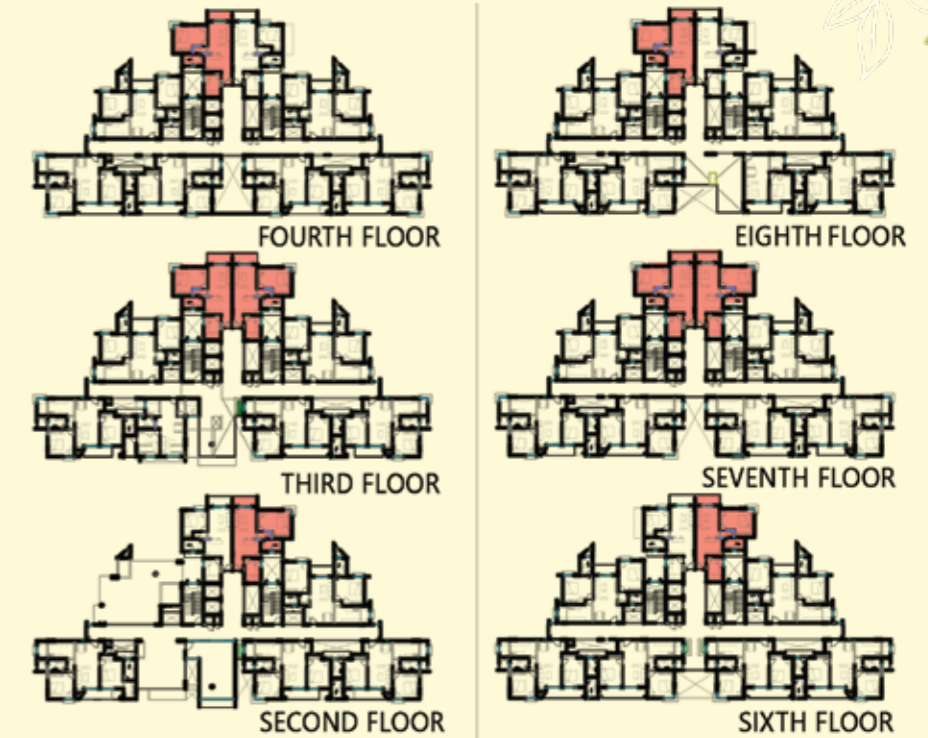
The information depicted herein viz., master plans, floor plans, furniture layout, fittings, illustrations, specifications, designs, dimensions, rendered views, colours, amenities and facilities etc., are subject to change without notifications as may be required by the relevant authorities or the developer's architect, and cannot form part of an offer or contract. Whilst every care is taken in providing this information, the Developer cannot be held liable for variations. All illustrations and pictures are artist's impression only. The information are subject to variations, additions, deletions, substitutions and modifications as may be recommended by the company's architect and/or the relevant approving authorities. The Developer is wholly exempt from any liability on account of any claim in this regard. (1 square metre = 10.764 square feet). E & OE.

All dimensions and calculations are done in metric system (M/ Sq.m), and imperial system (Ft/ Sq.ft) shown is for reference only.

Goldspire
at
BRIGADE
ORCHARDS

1.5 BHK UNIT (1 Bedroom + 1 Study + 1 Toilet)

KEY PLAN



SUPER BUILT-UP AREA

91.97 Sq.m (990 Sq.ft.)

UNIT CARPET AREA

53.50 Sq.m (575.87 Sq.ft.)

BALCONY CARPET AREA

3.93 sq.m (42.30 Sq.ft.)



The information depicted herein viz., master plans, floor plans, furniture layout, fittings, illustrations, specifications, designs, dimensions, rendered views, colours, amenities and facilities etc., are subject to change without notifications as may be required by the relevant authorities or the developer's architect, and cannot form part of an offer or contract. Whilst every care is taken in providing this information, the Developer cannot be held liable for variations. All illustrations and pictures are artist's impression only. The information are subject to variations, additions, deletions, substitutions and modifications as may be recommended by the company's architect and/or the relevant approving authorities. The Developer is wholly exempt from any liability on account of any claim in this regard. (1 square metre = 10.764 square feet). E & OE.

All dimensions and calculations are done in metric system (M/ Sq.m), and imperial system (Ft/ Sq.ft) shown is for reference only.

Goldspire
at
BRIGADE
ORCHARDS



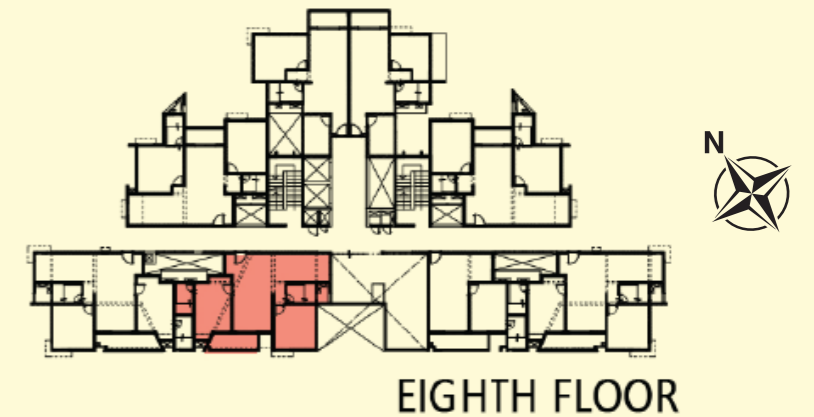
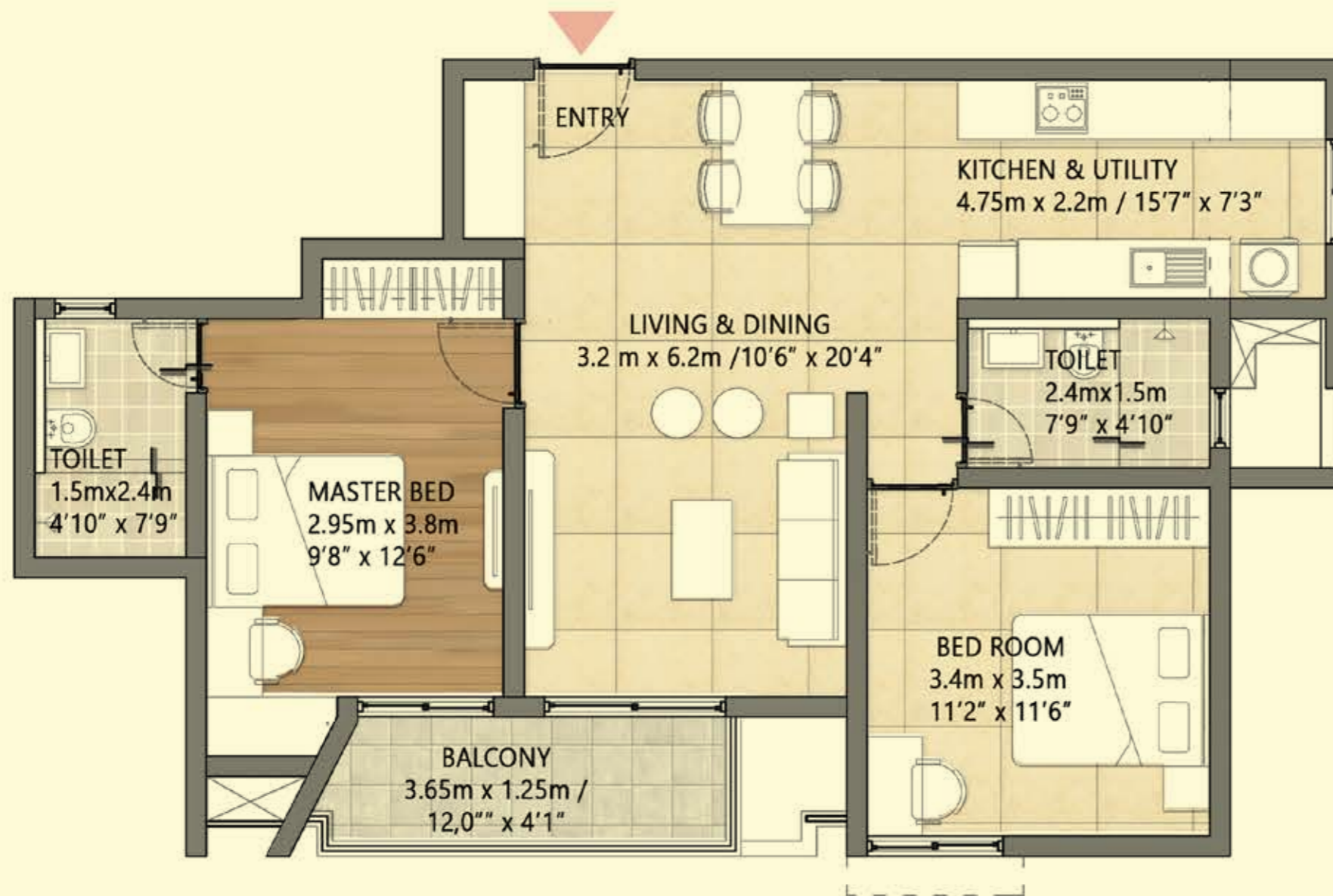
UNIT PLANS

2 Bedroom homes

116.01 Sq.m (1249 Sq.ft.) - 128.57 Sq.m (1384 Sq.ft.)

2 BHK UNIT (2 Bedroom + 2 Toilet)

KEY PLAN



SUPER BUILT-UP AREA

116.01 Sq.m (1249 Sq.ft.)

UNIT CARPET AREA

68.48 Sq.m (737.11 Sq.ft.)

BALCONY CARPET AREA

4.87 sq.m (52.42 Sq.ft.)

The information depicted herein viz., master plans, floor plans, furniture layout, fittings, illustrations, specifications, designs, dimensions, rendered views, colours, amenities and facilities etc., are subject to change without notifications as may be required by the relevant authorities or the developer's architect, and cannot form part of an offer or contract. Whilst every care is taken in providing this information, the Developer cannot be held liable for variations. All illustrations and pictures are artist's impression only. The information are subject to variations, additions, deletions, substitutions and modifications as may be recommended by the company's architect and/or the relevant approving authorities. The Developer is wholly exempt from any liability on account of any claim in this regard. (1 square metre = 10.764 square feet). E & OE.

All dimensions and calculations are done in metric system (M/ Sq.m), and imperial system (Ft/ Sq.ft) shown is for reference only.

Goldspire
at
BRIGADE
ORCHARDS



2
Bedroom
Homes

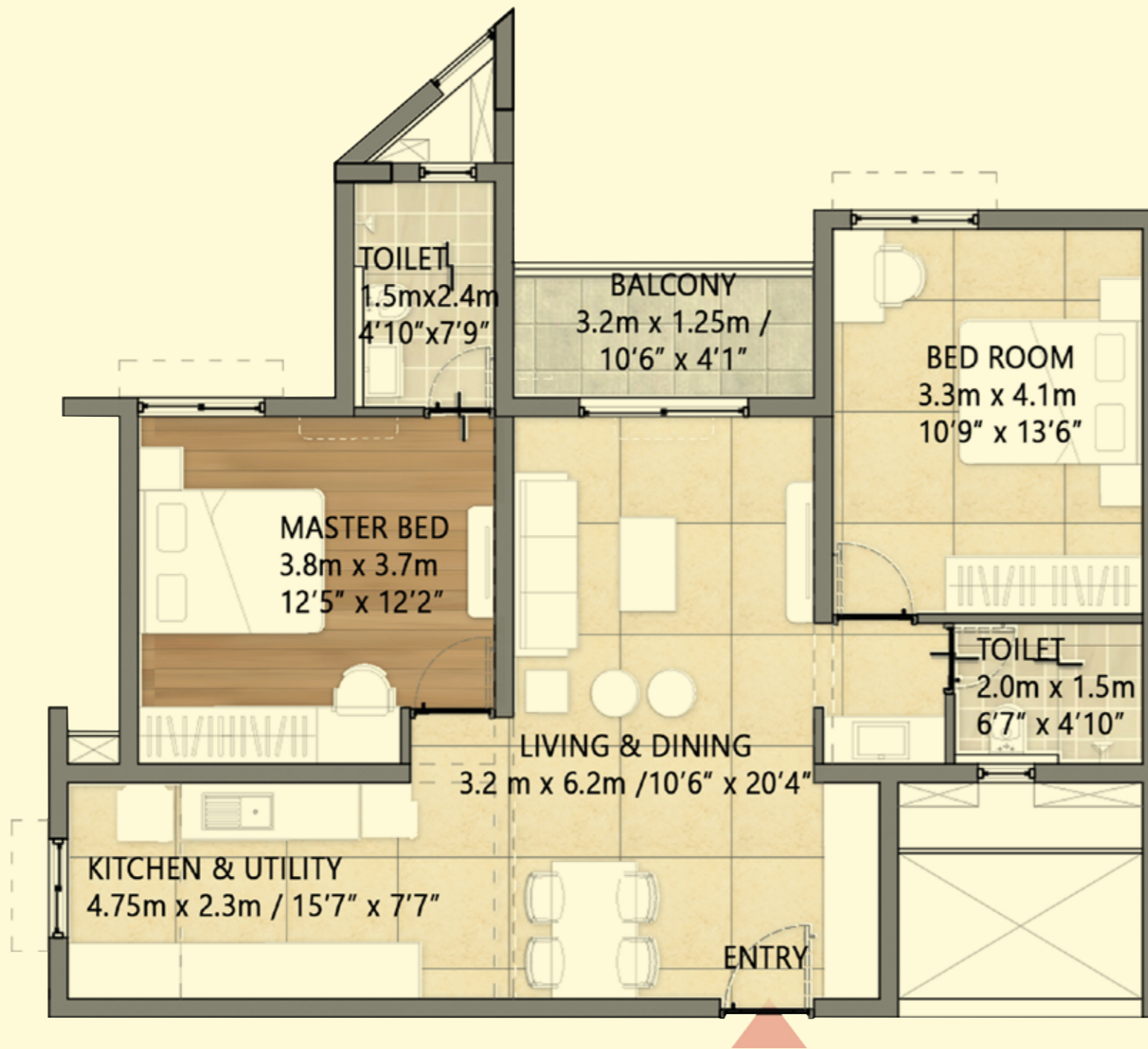




2
Bedroom
Homes



2 BHK UNIT (2 Bedroom + 2 Toilet)



KEY PLAN



SUPER BUILT-UP AREA

119.51 Sq.m (1286 Sq.ft.)

UNIT CARPET AREA

71.41 Sq.m (768.66 Sq.ft.)

BALCONY CARPET AREA

4.00 sq.m (43.05 Sq.ft.)

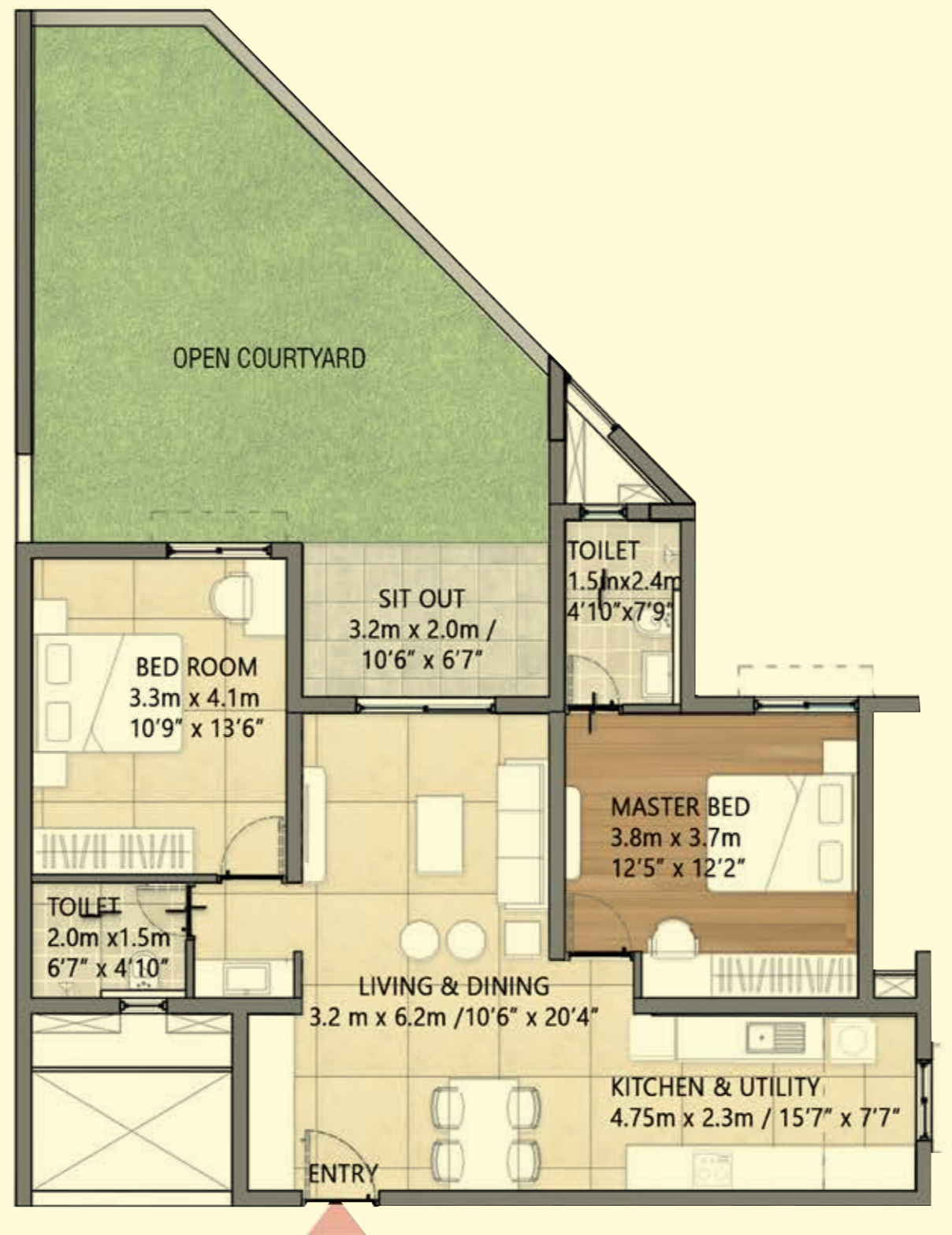


The information depicted herein viz., master plans, floor plans, furniture layout, fittings, illustrations, specifications, designs, dimensions, rendered views, colours, amenities and facilities etc., are subject to change without notifications as may be required by the relevant authorities or the developer's architect, and cannot form part of an offer or contract. Whilst every care is taken in providing this information, the Developer cannot be held liable for variations. All illustrations and pictures are artist's impression only. The information are subject to variations, additions, deletions, substitutions and modifications as may be recommended by the company's architect and/or the relevant approving authorities. The Developer is wholly exempt from any liability on account of any claim in this regard. (1 square metre = 10.764 square feet). E & OE.

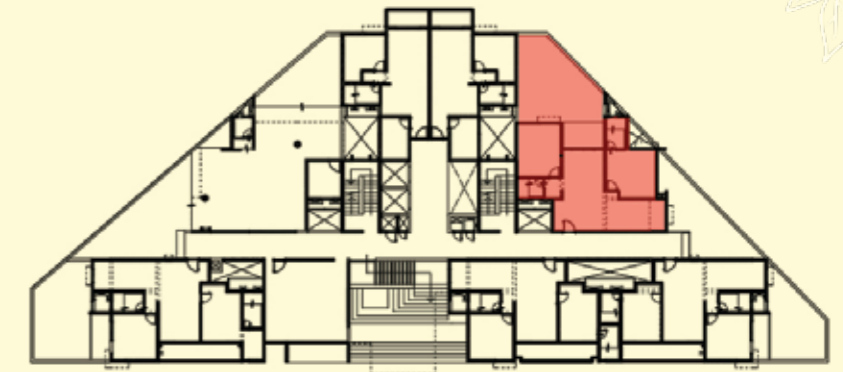
All dimensions and calculations are done in metric system (M/ Sq.m), and imperial system (Ft/ Sq.ft) shown is for reference only.

Goldspire
at
BRIGADE
ORCHARDS

2 BHK UNIT (2 Bedroom + 2 Toilet)



KEY PLAN



FIRST FLOOR

SUPER BUILT-UP AREA
119.56 Sq.m (1287 Sq.ft.)
UNIT CARPET AREA
71.41 Sq.m (768.66 Sq.ft.)
BALCONY CARPET AREA
4.48 sq.m (48.22 Sq.ft.)
OPEN COURTYARD CARPET AREA
36.62 sq.m (394.17 Sq.ft.)

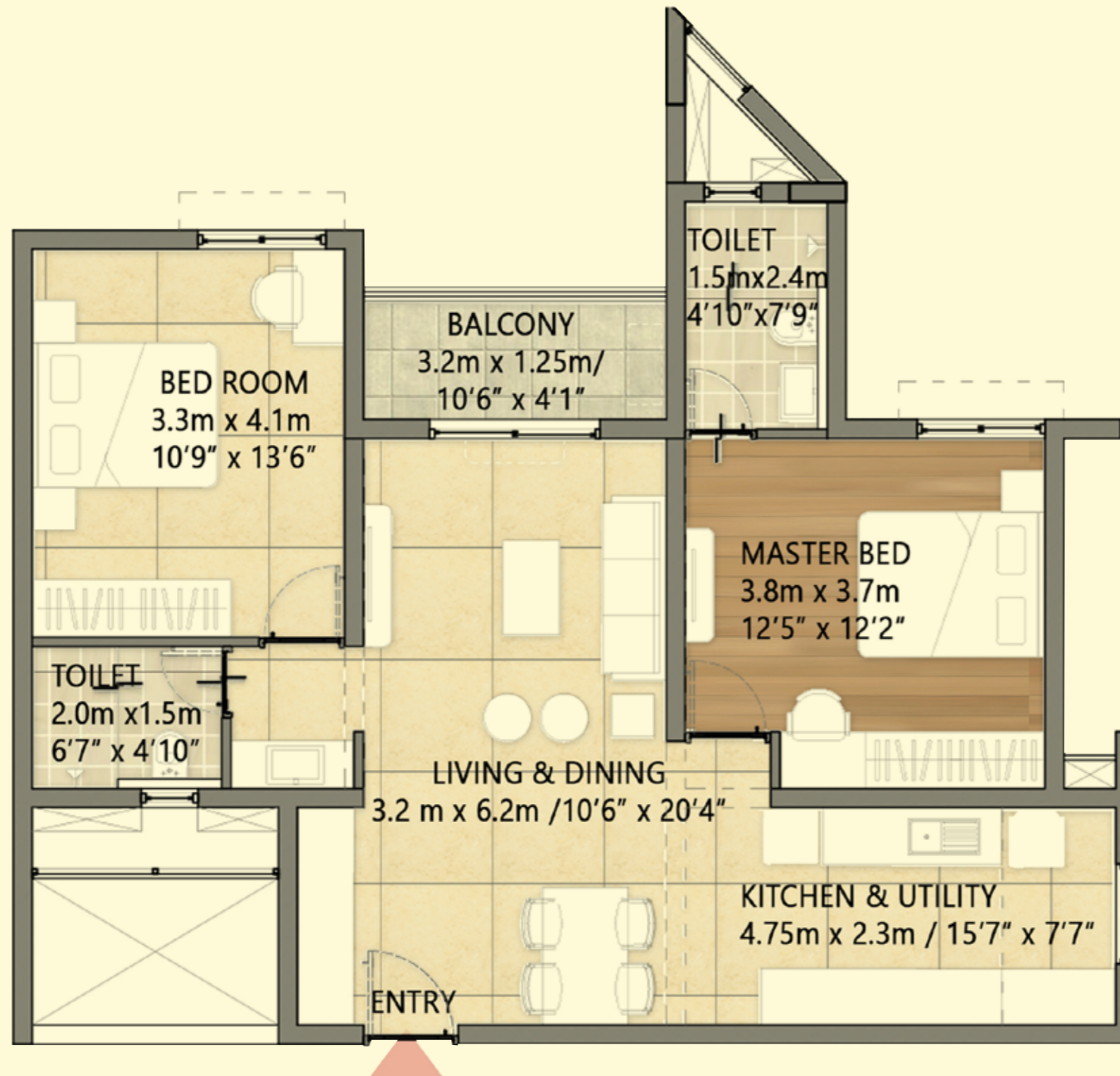


The information depicted herein viz., master plans, floor plans, furniture layout, fittings, illustrations, specifications, designs, dimensions, rendered views, colours, amenities and facilities etc., are subject to change without notifications as may be required by the relevant authorities or the developer's architect, and cannot form part of an offer or contract. Whilst every care is taken in providing this information, the Developer cannot be held liable for variations. All illustrations and pictures are artist's impression only. The information are subject to variations, additions, deletions, substitutions and modifications as may be recommended by the company's architect and/or the relevant approving authorities. The Developer is wholly exempt from any liability on account of any claim in this regard. (1 square metre = 10.764 square feet). E & OE.

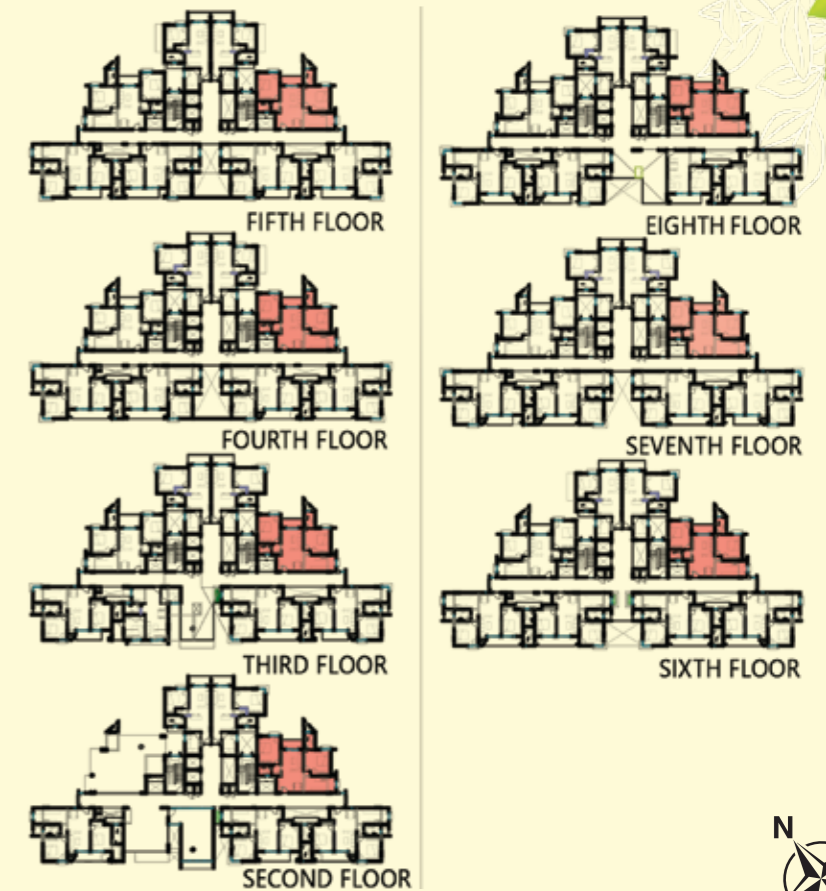
All dimensions and calculations are done in metric system (M/ Sq.m), and imperial system (Ft/ Sq.ft) shown is for reference only.

Goldspire
at
BRIGADE
ORCHARDS

2 BHK UNIT (2 Bedroom + 2 Toilet)



KEY PLAN



SUPER BUILT-UP AREA

119.56 Sq.m (1287 Sq.ft.)

UNIT CARPET AREA

71.41 Sq.m (768.66 Sq.ft.)

BALCONY CARPET AREA

4.00 sq.m (43.05 Sq.ft.)

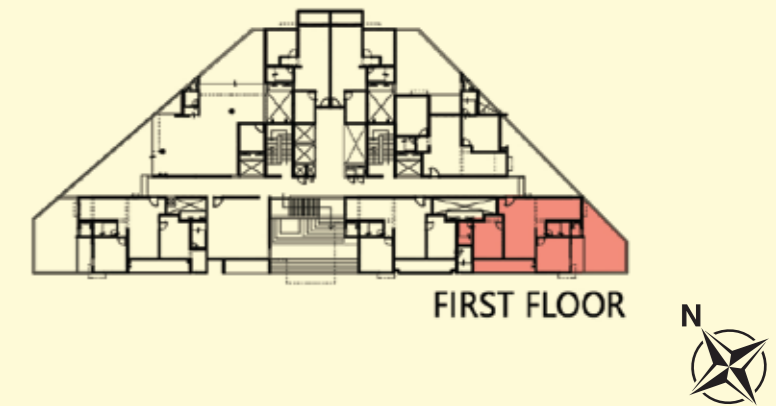
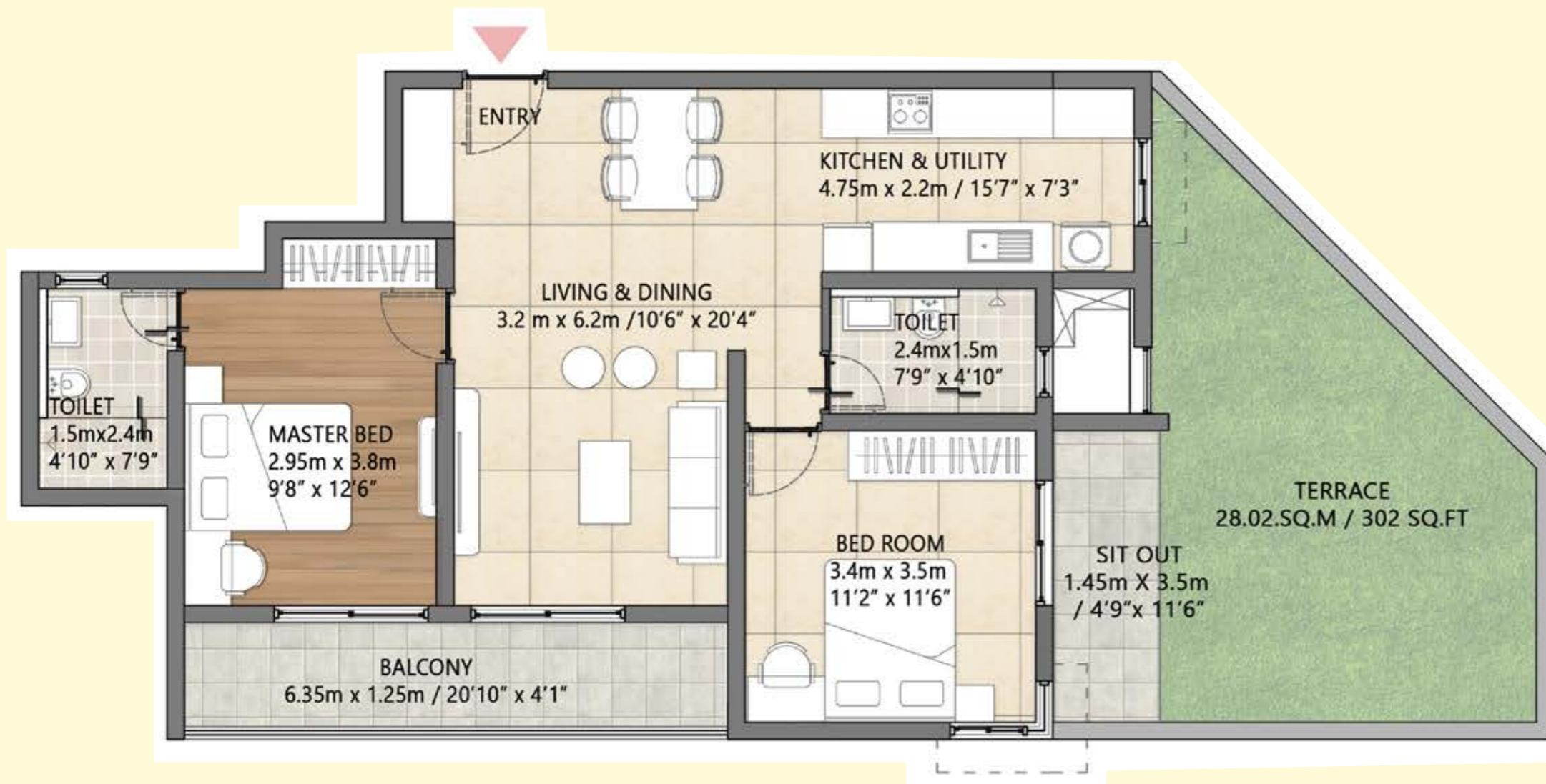
The information depicted herein viz., master plans, floor plans, furniture layout, fittings, illustrations, specifications, designs, dimensions, rendered views, colours, amenities and facilities etc., are subject to change without notifications as may be required by the relevant authorities or the developer's architect, and cannot form part of an offer or contract. Whilst every care is taken in providing this information, the Developer cannot be held liable for variations. All illustrations and pictures are artist's impression only. The information are subject to variations, additions, deletions, substitutions and modifications as may be recommended by the company's architect and/or the relevant approving authorities. The Developer is wholly exempt from any liability on account of any claim in this regard. (1 square metre = 10.764 square feet). E & OE.

All dimensions and calculations are done in metric system (M/ Sq.m), and imperial system (Ft/ Sq.ft) shown is for reference only.

Goldspire
at
BRIGADE
ORCHARDS

2 BHK UNIT (2 Bedroom + 2 Toilet)

KEY PLAN



SUPER BUILT-UP AREA

120.19 Sq.m (1294 Sq.ft.)

UNIT CARPET AREA

67.77 Sq.m (729.47 Sq.ft.)

BALCONY CARPET AREA

8.00 sq.m (43.05 Sq.ft.)

OPEN COURTYARD CARPET AREA

28.02 sq.m (302 Sq.ft.)

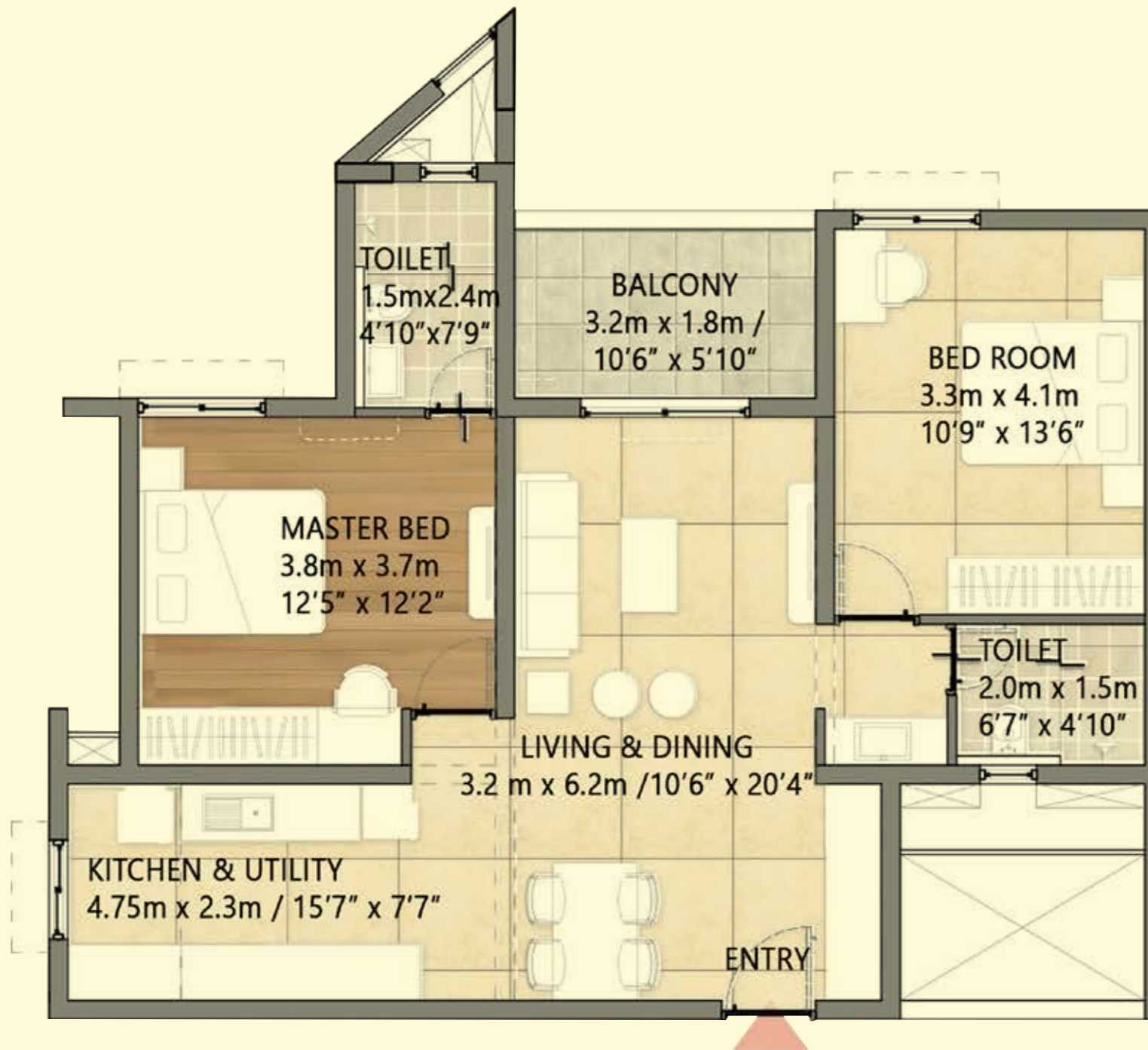
The information depicted herein viz., master plans, floor plans, furniture layout, fittings, illustrations, specifications, designs, dimensions, rendered views, colours, amenities and facilities etc., are subject to change without notifications as may be required by the relevant authorities or the developer's architect, and cannot form part of an offer or contract. Whilst every care is taken in providing this information, the Developer cannot be held liable for variations. All illustrations and pictures are artist's impression only. The information are subject to variations, additions, deletions, substitutions and modifications as may be recommended by the company's architect and/or the relevant approving authorities. The Developer is wholly exempt from any liability on account of any claim in this regard. (1 square metre = 10.764 square feet). E & OE.

All dimensions and calculations are done in metric system (M/ Sq.m), and imperial system (Ft/ Sq.ft) shown is for reference only.

Goldspire
at
BRIGADE
ORCHARDS

2 BHK UNIT (2 Bedroom + 2 Toilet)

KEY PLAN



THIRD FLOOR

SUPER BUILT-UP AREA

122.29 Sq.m (1316 Sq.ft.)

UNIT CARPET AREA

71.41 Sq.m (768.66 Sq.ft.)

BALCONY CARPET AREA

5.75 sq.m (61.89 Sq.ft.)

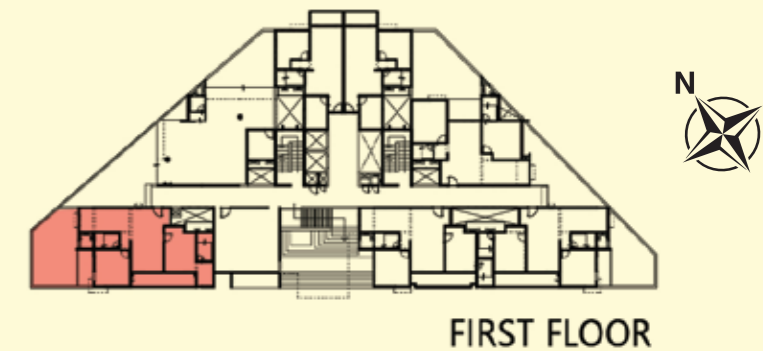
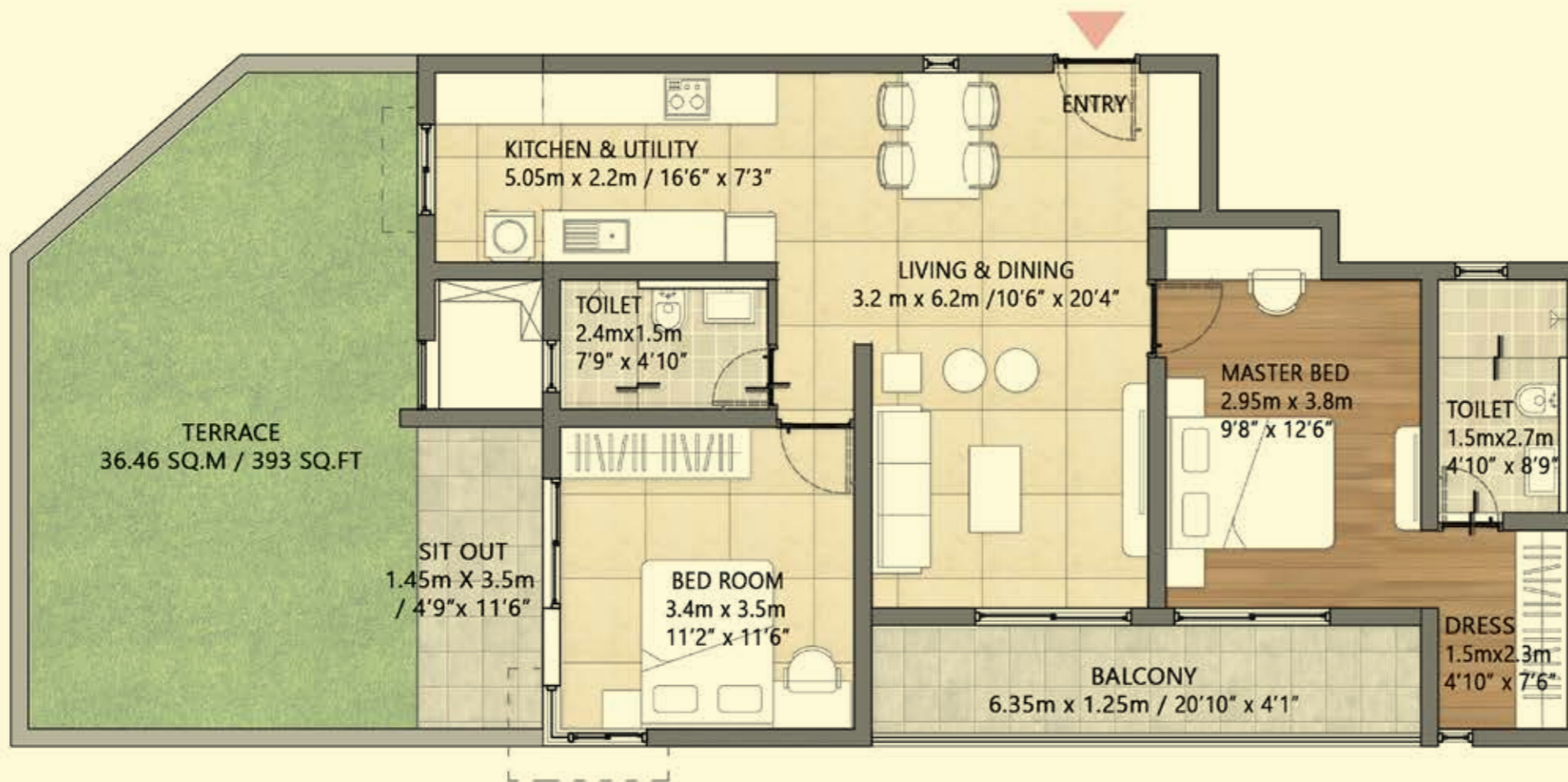
The information depicted herein viz., master plans, floor plans, furniture layout, fittings, illustrations, specifications, designs, dimensions, rendered views, colours, amenities and facilities etc., are subject to change without notifications as may be required by the relevant authorities or the developer's architect, and cannot form part of an offer or contract. Whilst every care is taken in providing this information, the Developer cannot be held liable for variations. All illustrations and pictures are artist's impression only. The information are subject to variations, additions, deletions, substitutions and modifications as may be recommended by the company's architect and/or the relevant approving authorities. The Developer is wholly exempt from any liability on account of any claim in this regard. (1 square metre = 10.764 square feet). E & OE.

All dimensions and calculations are done in metric system (M/ Sq.m), and imperial system (Ft/ Sq.ft) shown is for reference only.

Goldspire
at
BRIGADE
ORCHARDS

2 BHK UNIT (2 Bedroom + 2 Toilet)

KEY PLAN



SUPER BUILT-UP AREA

128.57 Sq.m (1384 Sq.ft.)

UNIT CARPET AREA

72.92 Sq.m (784.91 Sq.ft.)

BALCONY CARPET AREA

7.93 sq.m (85.35 Sq.ft.)

OPEN COURTYARD CARPET AREA

36.46 sq.m (393 Sq.ft.)

The information depicted herein viz., master plans, floor plans, furniture layout, fittings, illustrations, specifications, designs, dimensions, rendered views, colours, amenities and facilities etc., are subject to change without notifications as may be required by the relevant authorities or the developer's architect, and cannot form part of an offer or contract. Whilst every care is taken in providing this information, the Developer cannot be held liable for variations. All illustrations and pictures are artist's impression only. The information are subject to variations, additions, deletions, substitutions and modifications as may be recommended by the company's architect and/or the relevant approving authorities. The Developer is wholly exempt from any liability on account of any claim in this regard. (1 square metre = 10.764 square feet). E & OE.

All dimensions and calculations are done in metric system (M/ Sq.m), and imperial system (Ft/ Sq.ft) shown is for reference only.

Goldspire
at
BRIGADE
ORCHARDS

SPECIFICATIONS

FOUNDATION:

Isolated/ Combined footing

SUPER STRUCTURE:

RCC framed structure

BLOCK WORK:

Solid concrete block

FLOORING IN COMMON AREAS

GF Lobby/ lift lobby: Marble

Staircases in all floors: Concrete step tiles/ vitrified tiles/ sadarahalli granite

Other lift lobby and corridors (upper): Vitrified tiles (Matt Finish)

MEP rooms: IPS floor with smooth finish

Terrace: Clay tiles with water proofing

Basement: IPS with smooth finish

FLOORING IN UNITS

Living/ Dining/ Family/ Foyer: Wooden Finish Vitrified Tiles

Master Bedroom: Wooden Finish Vitrified Tiles

Other Bedrooms: Wooden Finish Vitrified Tiles

Balcony/ deck: Matt finish tiles

Master Bedroom Toilet: Anti-skid ceramic tiles

Common Toilet: Anti-skid ceramic tiles

Kitchenette/ Kitchen: Vitrified tiles

WALL DADO

Kitchenette/ Kitchen: Provision for modular kitchen. Surface prepared for glazed tile upto 2' height (above platform)

Master Bedroom Toilet: Ceramic tiles cladding up to false ceiling height

Common Toilet: Ceramic tiles cladding up to false ceiling height

KITCHEN

a.Counter: Provision for modular kitchen

b.Plumbing & Electrical: Plumbing point provision for Water Purifier and Washing Machine. Electrical points provision for Water Purifier, Refrigerator, Hob, Chimney, Mixer/ Grinder, Microwave Oven and Washing Machine.

TOILETS:

CP Fittings: Kohler/ Grohe

Sanitary fixtures: Wall mounted white EWC with concealed flush tank

Accessories: Towel rod

False Ceiling: Grid ceiling Calcium silicate or equivalent

DOORS

Main entry door to unit: Flush shutter with both side laminate and architrave. Lacquered PU polish finished

Bedroom doors: Engineered/ Treated Hard wood frame. Shutter with both side HDF skin/ laminate and architrave

Toilet door: Engineered/ Treated Hard wood frame, Shutter with both side laminate and architrave

Balcony door: UPVC

Shaft door: MS door frame with mild sheet shutter

RAILING

Balcony railing: MS railing

Stair Railing (Common areas): MS railing

WINDOWS:

UPVC with mosquito mesh provision and safety grill.

SPECIFICATIONS

PAINTING & FINISHES

- a) **Exterior finish:** Combination of external texture paint with external grade emulsion
- b) **Internal ceilings:**
Common area: Oil Bound Distemper or Emulsion
Lift Lobby: Oil Bound Distemper or Emulsion
Staircase, utility area and service area: Oil Bound Distemper or Emulsion
Basement: Cement paint/ Oil bound distemper
Unit ceiling: Acrylic emulsion paint
- c) **Internal walls:**
Common area: Emulsion paint
Lift Lobby: Emulsion paint
Staircase, utility area and service area: Oil bound distemper
Basement: Cement paint
Unit walls: Acrylic emulsion paint
- d) **Steel works:** Synthetic enamel paint
- e) **Woodwork:** Enamel paint

WATER SUPPLY/DRAINAGE: CPVC for water supply

- a) **Sewage Line: UPVC**
- b) **Water supply: Treatment - WTP**
- External piping: UPVC
- Internal piping: CPVC
- Flushing: STP treated water
- c) **Drainage: Treatment - STP**
- External piping: PVC
- Internal piping: PVC

AIR CONDITIONING

Master Bedroom & Living/Dining area: Provision for 16A switch & socket point with wiring for split AC

ELECTRICAL:

- 2 BHK: 4 KW**
1.5 BHK: 3 KW
1 BHK: 3 KW

Modular switches: Anchor or equivalent make.

DG Backup: 2-KW for 2 BHK, 1.5-KW for 1.5 BHK, 1-KW for 1 BHK, Emergency power for lifts, pumps & lighting in common areas – 100%

VERTICAL TRANSPORTATION:

Lifts provided - OTIS/ Schinder/ Fujitec/ Johnson/ Equivalent

SECURITY SYSTEM & AUTOMATIONS:

Provision for CCTV as per design

GAS SUPPLY*: On subscription basis

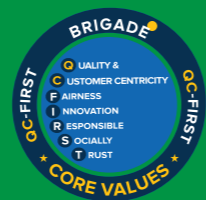
SUSTAINABILITY:

- Solar water heater:** Provided only for top 2 floors*
- Organic waste converter**
- Ground water recharging**
- Rain water storage**
- Street light**
- Sewage Treatment Plant**

CAR PARKING: As per local authority requirement



Our Core Values



Founders



Awarded
11 years in a row



To UPGRADE TO BRIGADE,

email: salesenquiry@brigadegroup.com

Offices also at: CHENNAI • MYSURU • HYDERABAD