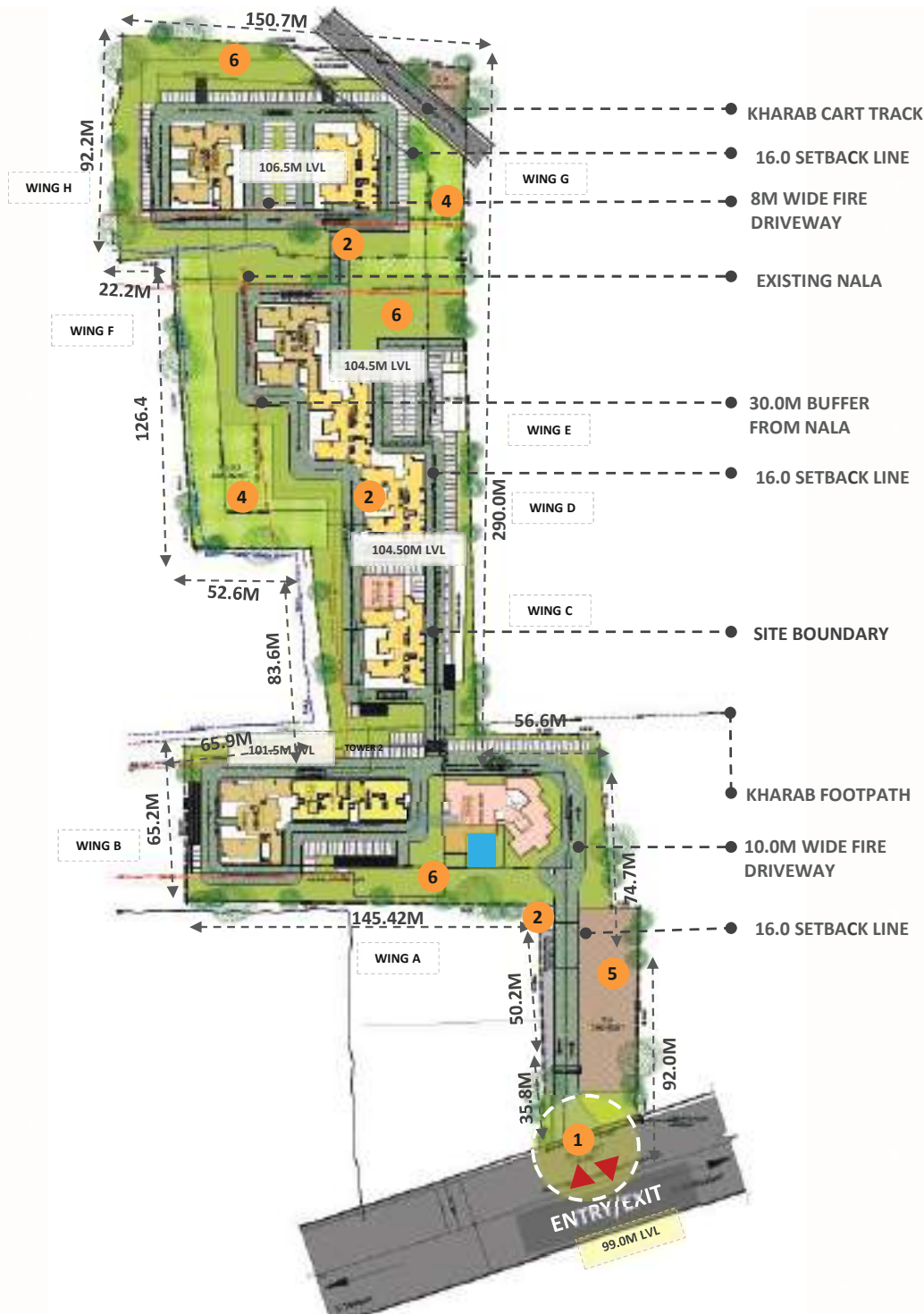




 **SATTVA
LUMINA**

Studio, 1, 2 & 3 BHK Apartments - Yelahanka

Master Plan



LEGEND

- 1. ENTRY/EXIT
- 2. 8M WIDE FIRE DRIVEWAY
- 3. CLUBHOUSE
- 4. POS
- 5. CIVIC AMENITIES
- 6. GREEN OPEN SPACES

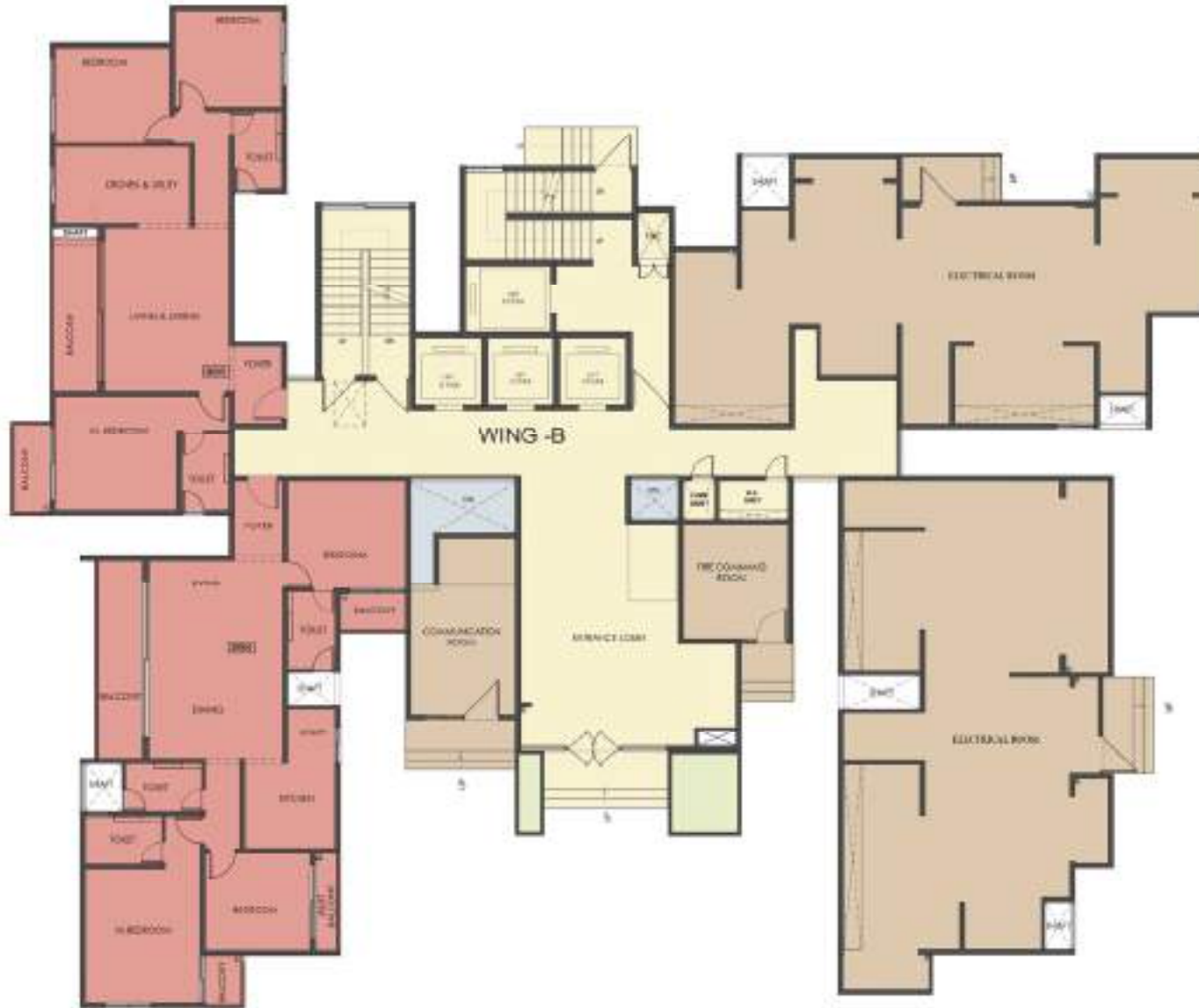
- TOWER 1 : 2B+G+30 FLOORS (2 NOS)
- TOWER 1 : 2B+G+31 FLOORS (1 NOS)
- TOWER 2 : 2B+G+30 FLOORS (4 NOS)
- TOWER 3 : 2B+G+30 FLOORS (1 NOS)
- CLUBHOUSE

- NALA LINE
- NALA BUFFER LINE
- POS
- CIVIC AMENITIES

SITE AREA : 51951.09 SQM | 12.83 ACRES

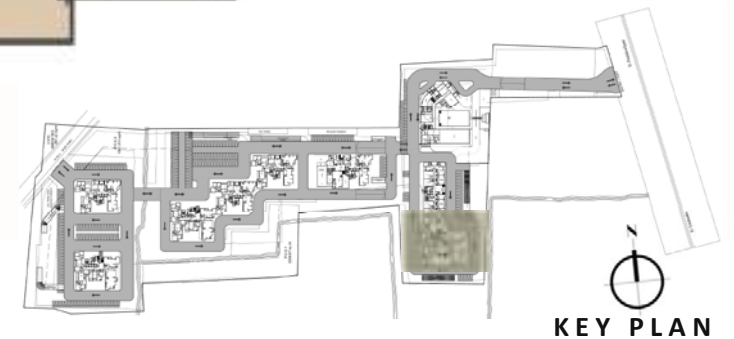


Ground Floor Plan - Block 1 Wing B



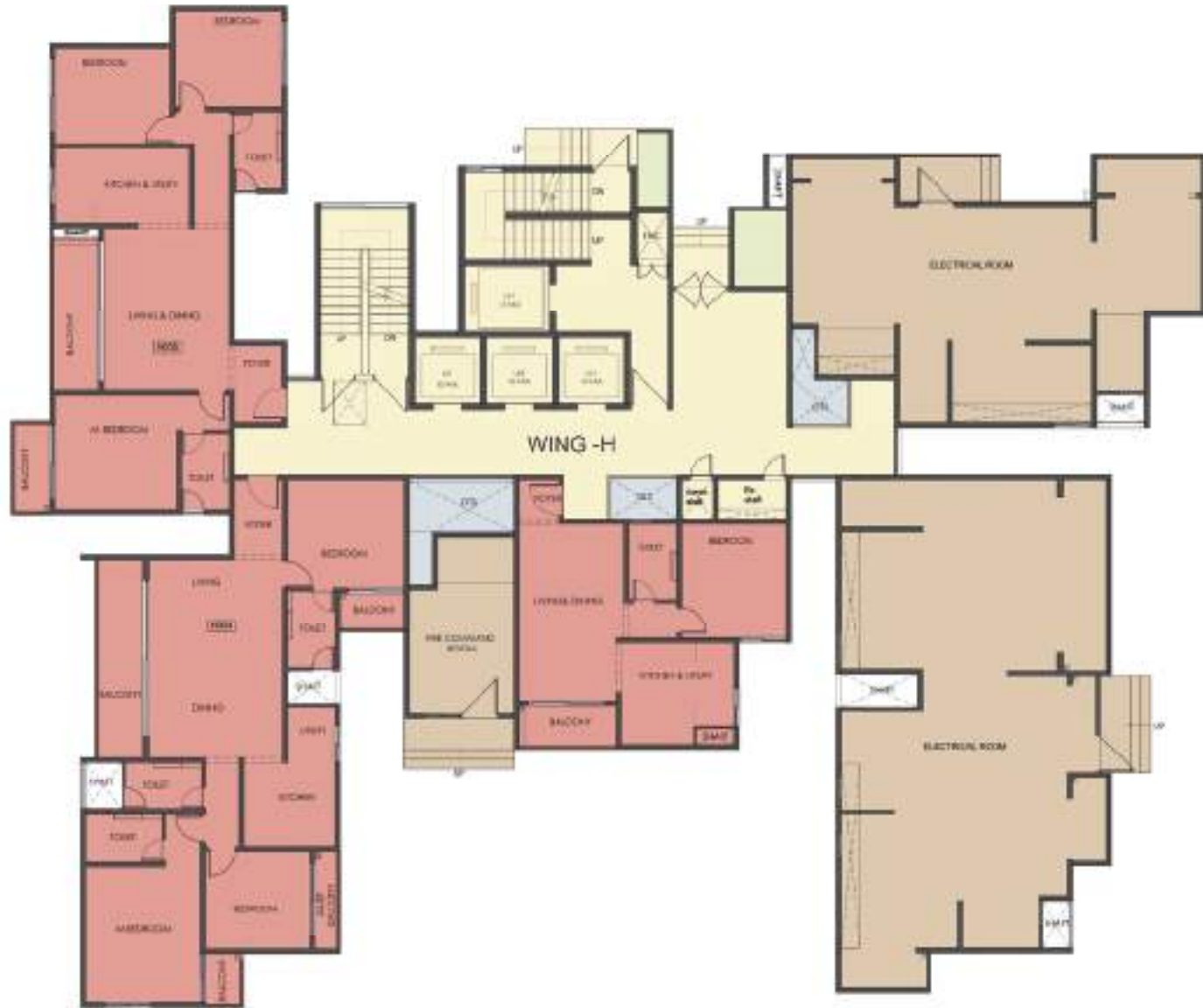
WING B

SL. NO.	UNIT NO.	TYPE OF UNITS		SALEABLE AREA		CARPET AREA		BALCONY AREA	
		UNIT DESCRIPTION	TYPE	IN SQM	IN SFT	IN SQM	IN SFT	IN SQM	IN SFT
4	B-004	3BHK+3T	1	167.62	1,804	101.30	1,001	16.822	181
5	B-005	3BHK+2T	1	142.06	1,536	89.04	958	11.070	119



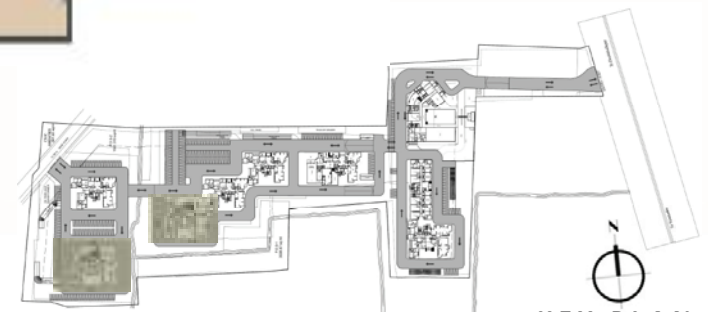
KEY PLAN

Ground Floor Plan - Block 1 Wing F & H



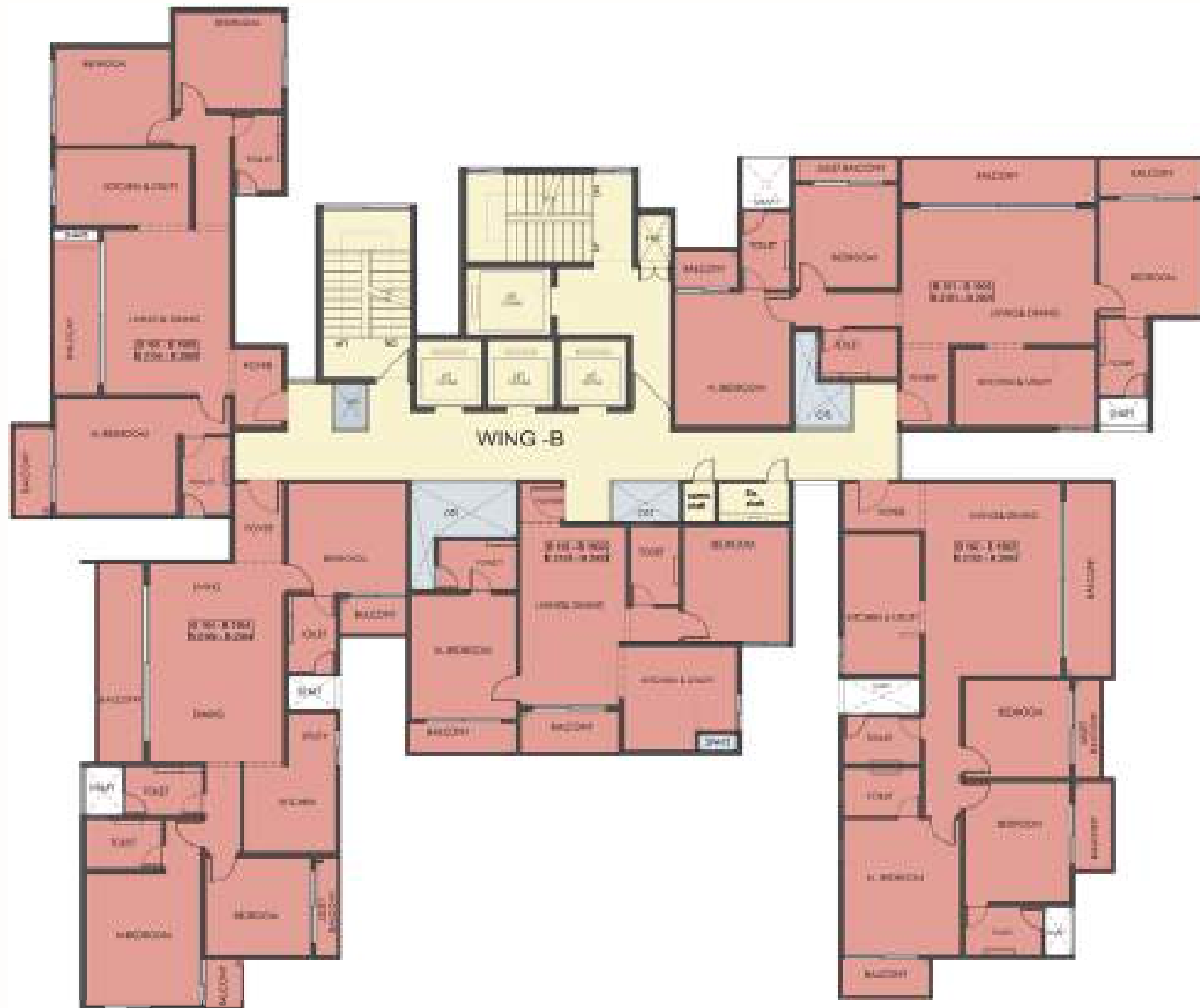
WING F & H

SL.NO.	UNIT NO.	TYPE OF UNITS		SALEABLE AREA		CARPET AREA		BALCONY AREA	
		UNIT DESCRIPTION	TYPE	IN SQM	IN SFT	IN SQM	IN SFT	IN SQM	IN SFT
3	F-003	1BHK+1T	2	81.04	872	50.99	549	4.354	47
4	F-004	3BHK+3T	1	167.62	1,804	101.39	1,091	16.822	183
5	F-005	3BHK+2T	1	143.22	1,542	89.04	958	11.070	119



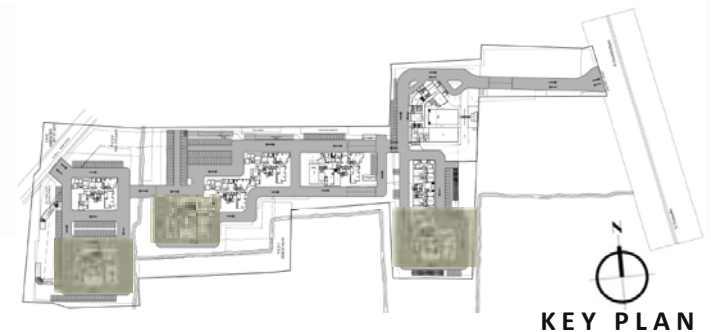
KEY PLAN

Typical Floor Plan (1st to 19th & 21st to 29th Floors) - Block 1 Wing B, F & H



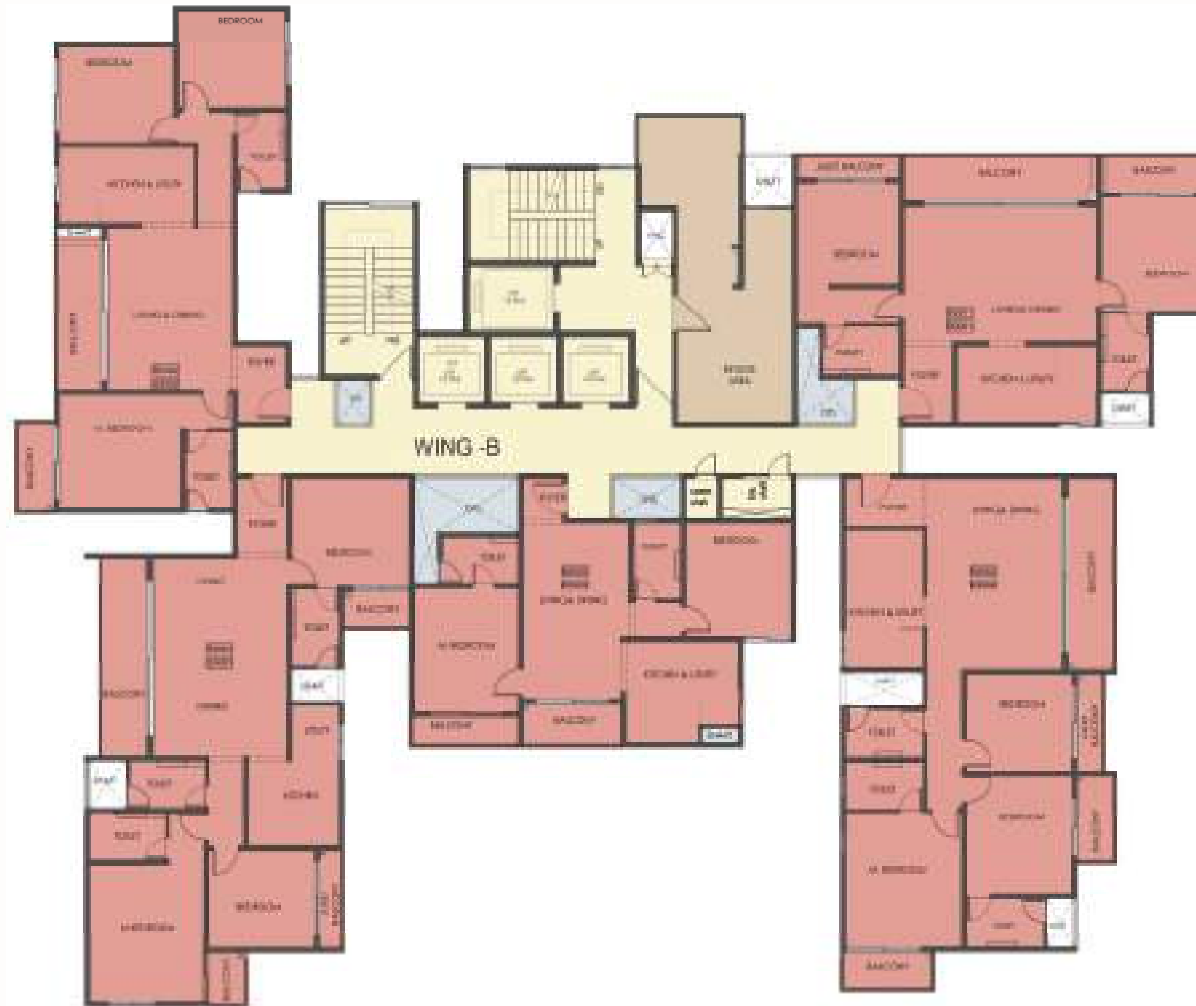
WING B, F & H

SL. NO.	UNIT NO.	TYPE OF UNITS		SALEABLE AREA		CARPET AREA		BALCONY AREA	
		UNIT DESCRIPTION	TYPE	IN SQM	IN SFT	IN SQM	IN SFT	IN SQM	IN SFT
1	B-1101-2901 (2301-2901)	3BHK+3T	3	166.70	1,794	98.85	1,064	18.593	200
2	B-1102-2902 (2302-2902)	3BHK+3T	2	199.32	1,823	101.24	1,090	19.268	207
3	B-1103-2903 (2303-2903)	2BHK+2T	1	130.05	1,185	69.17	745	7.864	85
4	B-1104-2904 (2304-2904)	3BHK+3T	1	167.46	1,803	101.39	1,091	16.822	181
5	B-1105-2905 (2305-2905)	3BHK+2T	1	142.66	1,536	89.04	958	11.070	119



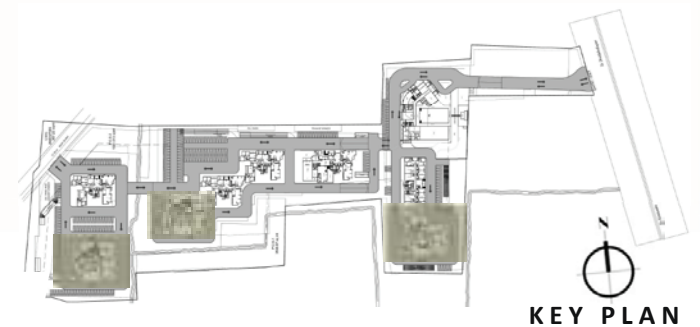
KEY PLAN

Refuge Floor Plan (20th & 30th Floor) - Block 1 Wing B, F & H



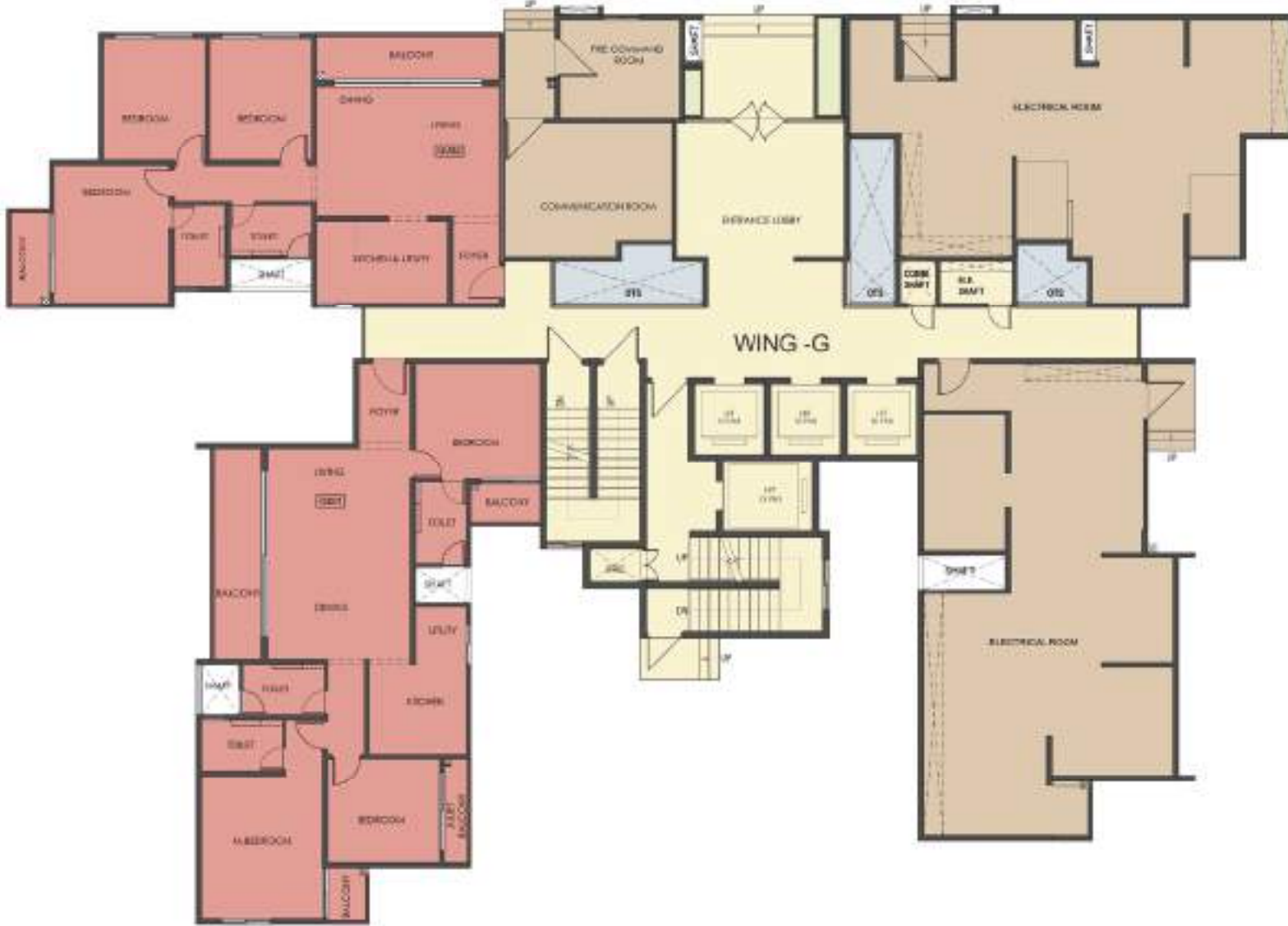
WING B, F & H

SL.NO.	UNIT NO.	TYPE OF UNITS		SALEABLE AREA		CARPET AREA		BALCONY AREA	
		UNIT DESCRIPTION	TYPE	IN SQM	IN SFT	IN SQM	IN SFT	IN SQM	IN SFT
1	B-(2001 & 3001)	2BHK-2T	4	134.28	1,445	78.88	849	16.131	174
2	B-(2002 & 3002)	3BHK-3T	2	169.32	1,823	101.24	1,090	19.268	207
3	B-(2003 & 3003)	2BHK-2T	1	110.05	1,185	69.17	745	7.804	85
4	B-(2004 & 3004)	3BHK-3T	1	167.46	1,803	101.39	1,091	16.822	181
5	B-(2005 & 3005)	3BHK-2T	1	142.66	1,536	89.04	956	11.070	119



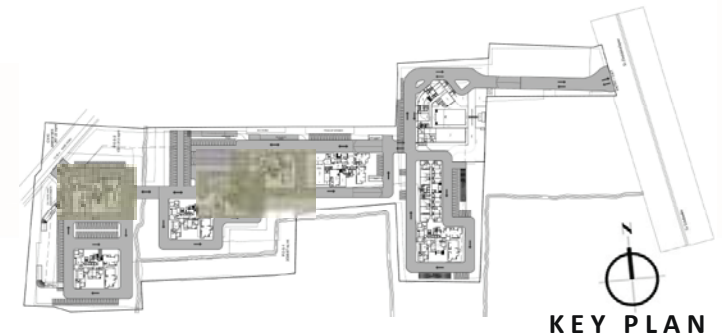
KEY PLAN

Ground Floor Plan - Block 2 Wing D, E & G



WING D, E & G

SL.NO.	UNIT NO.	TYPE OF UNITS		SALEABLE AREA		CARPET AREA		BALCONY AREA	
		UNIT DESCRIPTION	TYPE	IN SQM	IN SFT	IN SQM	IN SFT	IN SQM	IN SFT
1	G-001	3BHK+3T	1	108.02	1,809	101.39	1,091	16.82	181
2	G-002	3BHK+2T	2	140.39	1,511	88.07	948	11.45	123



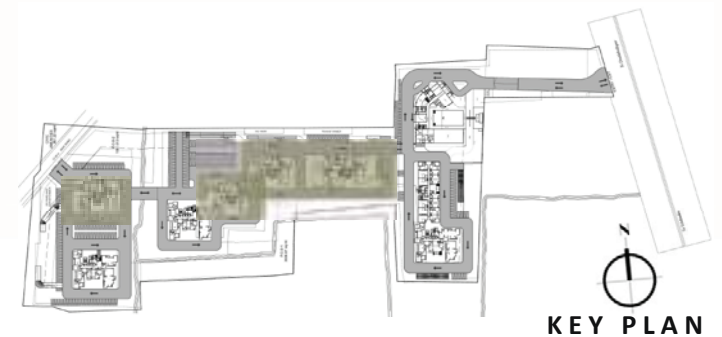
KEY PLAN

Typical Floor Plan (1st to 19th & 21st to 29th Floors) - Block 2 Wing C, D, E & G



WING C, D, E & G

SLNO.	UNIT NO.	TYPE OF UNITS		SALEABLE AREA		CARPET AREA		BALCONY AREA	
		UNIT DESCRIPTION	TYPE	IN SQM	IN SFT	IN SQM	IN SFT	IN SQM	IN SFT
1	D-[101-1901] (2101-2901)	3BHK+3T	1	168.02	1,809	301.39	1,091	16.82	181
2	D-[102-1902] (2102-2902)	3BHK+2T	2	139.81	1,505	88.07	948	11.45	123
3	D-[103-1903]	2BHK+2T	2	106.09	1,142	68.81	741	5.38	58
4	D-[104-1904] (2104-2904)	2BHK+2T	3	106.65	1,148	68.80	741	5.38	58
5	D-[105-1905] (2105-2905)	3BHK+2T	3	143.28	1,542	90.89	978	10.13	109

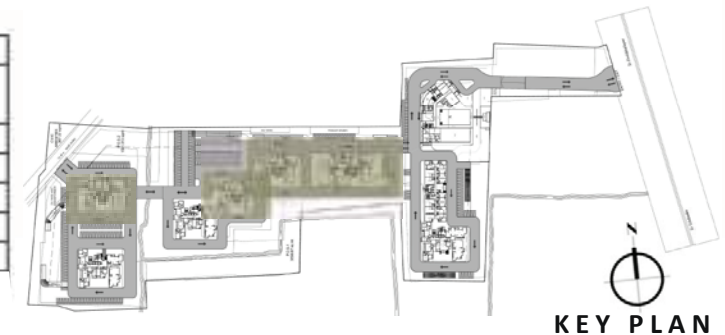


Refuge Floor Plan (20th & 30th Floor) - Block 2 Wing C, D, E & G



WING C,D,E&G

SL.NO.	UNIT NO.	TYPE OF UNITS		SALEABLE AREA		CARPET AREA		BALCONY AREA	
		UNIT DESCRIPTION	TYPE	IN SQM	IN SFT	IN SQM	IN SFT	IN SQM	IN SFT
1	D-(2001 & 3001)	3BHK+3T	1	168.02	1,809	101.39	1,091	16.82	181
2	D-(2002 & 3002)	3BHK+2T	2	139.81	1,505	88.07	948	11.45	123
3	D-(2003 & 3003)	2BHK+2T	2	106.09	1,142	68.81	741	5.38	58
4	D-(2004 & 3004)	2BHK+2T	3	106.65	1,148	68.80	741	5.38	58
5	D-(2005 & 3005)	3BHK+2T	3	143.28	1,542	90.89	978	10.13	109



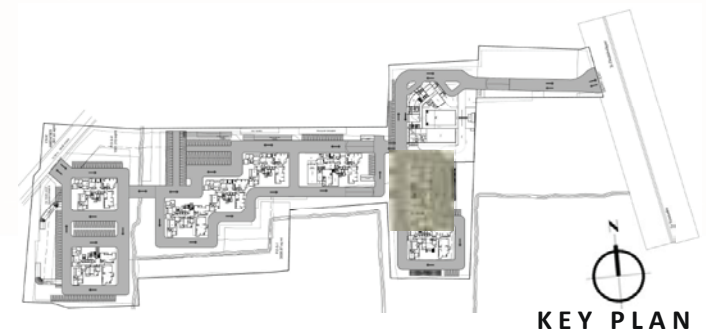
KEY PLAN

Ground Floor Plan - Block 3 Wing A



WING A

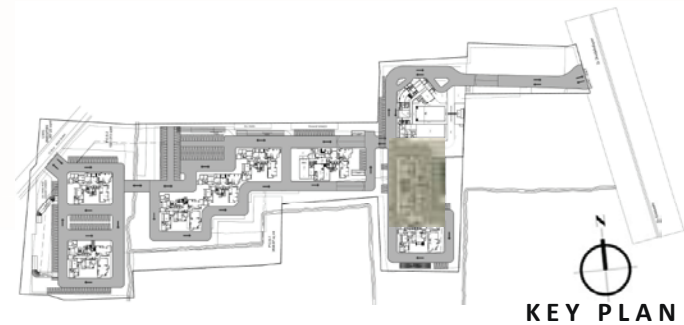
SL.NO.	UNIT NO.	TYPE OF UNITS		SALEABLE AREA		CARPET AREA		BALCONY AREA	
		UNIT DESCRIPTION	TYPE	IN SQM	IN SFT	IN SQM	IN SFT	IN SQM	IN SFT
1	A-001	STUDIO APARTMENT	ST1	40.34	434	24.98	269	2.208	24
2	A-002	STUDIO APARTMENT	ST1	39.36	424	24.98	269	2.208	24
3	A-003	STUDIO APARTMENT	ST1	39.36	424	24.98	269	2.208	24
4	A-004	1BHK+1T	1	63.99	683	39.38	424	5.277	57
5	A-005	1BHK+1T	1	64.09	690	39.38	424	5.277	57
6	A-011	1BHK+1T	1	64.95	699	39.38	424	5.277	57
7	A-012	1BHK+1T	1	64.09	690	39.38	424	5.277	57
8	A-013	STUDIO APARTMENT	ST1	39.36	424	24.98	269	2.208	24
9	A-014	STUDIO APARTMENT	ST1	39.36	424	24.98	269	2.208	24
10	A-015	STUDIO APARTMENT	ST1	39.36	430	24.98	269	2.208	24



Typical Floor Plan (1st to 19th & 21st to 29th Floors) - Block 3 Wing A



SL. NO.	UNIT NO.	TYPE OF UNITS		SALEABLE AREA		CARPET AREA		BALCONY AREA	
		UNIT DESCRIPTION	TYPE	IN SQM	IN SFT	IN SQM	IN SFT	IN SQM	IN SFT
1	A-(101-1901) (2101-2901)	STUDIO APARTMENT	ST1	40.34	434	14.98	269	1.208	24
2	A-(102-1902) (2102-2902)	STUDIO APARTMENT	ST1	38.36	424	14.98	269	1.208	24
3	A-(103-1903) (2103-2903)	STUDIO APARTMENT	ST1	39.36	424	14.98	269	1.208	24
4	A-(104-1904) (2104-2904)	1BHK+1T	1	63.49	683	39.38	424	5.277	57
5	A-(105-1905) (2105-2905)	1BHK+1T	1	64.09	690	39.38	424	5.277	57
6	A-(106-1906) (2106-2906)	1BHK+1T	1	64.09	690	39.38	424	5.277	57
7	A-(107-1907) (2107-2907)	1BHK+1T	1	63.49	683	39.38	424	5.277	57
8	A-(108-1908) (2108-2908)	1BHK+1T	1	64.64	698	39.38	424	5.277	57
9	A-(109-1909) (2109-2909)	1BHK+1T	1	64.35	693	39.38	424	5.277	57
10	A-(110-1910) (2110-2910)	1BHK+1T	1	63.49	683	39.38	424	5.277	57
11	A-(111-1911) (2111-2911)	1BHK+1T	1	64.09	690	39.38	424	5.277	57
12	A-(112-1912) (2112-2912)	1BHK+1T	1	64.09	690	39.38	424	5.277	57
13	A-(113-1913) (2113-2913)	STUDIO APARTMENT	ST1	39.36	424	14.98	269	1.208	24
14	A-(1014-1914) (2114-2914)	STUDIO APARTMENT	ST1	38.36	424	14.98	269	1.208	24
15	A-(1015-1915) (2115-2915)	STUDIO APARTMENT	ST1	38.36	424	14.98	269	1.208	24
16	A-(1016-1916) (2116-2916)	STUDIO APARTMENT	ST1	40.21	435	14.98	269	1.208	24



Refuge Floor Plan (20th & 30th Floor) - Block 3 Wing A

WING A



SL.NO.	UNIT NO.	TYPE OF UNITS		SALEABLE AREA		CARPET AREA		BALCONY AREA	
		UNIT DESCRIPTION	TYPE	IN SQM	IN SFT	IN SQM	IN SFT	IN SQM	IN SFT
1	A-(2001 & 3001)	STUDIO APARTMENT	ST1	40.34	434	24.98	269	2.208	24
2	A-(2002 & 3002)	STUDIO APARTMENT	ST1	39.36	424	24.98	269	2.208	24
3	A-(2003 & 3003)	STUDIO APARTMENT	ST1	39.36	424	24.98	269	2.208	24
4	A-(2004 & 3004)	1BHK-1T	1	63.49	683	39.38	424	5.277	57
5	A-(2005 & 3005)	1BHK-1T	1	64.09	690	39.38	424	5.277	57
6	A-(2006 & 3006)	1BHK-1T	1	64.09	690	39.38	424	5.277	57
7	A-(2007 & 3007)	1BHK-1T	1	63.49	683	39.38	424	5.277	57
8	A-(2008 & 3008)	1BHK-1T	1	64.64	696	39.38	424	5.277	57
9	A-(2009 & 3009)	refuge	1						
10	A-(2010 & 3010)	1BHK-1T	1	64.09	690	39.38	424	5.277	57
11	A-(2011 & 3011)	1BHK-1T	1	64.09	690	39.38	424	5.277	57
12	A-(2012 & 3012)	1BHK-1T	1	64.09	690	39.38	424	5.277	57
13	A-(2013 & 3013)	STUDIO APARTMENT	ST1	39.36	424	24.98	269	2.208	24
14	A-(2014 & 3014)	STUDIO APARTMENT	ST1	39.36	424	24.98	269	2.208	24
15	A-(2015 & 3015)	STUDIO APARTMENT	ST1	39.36	424	24.98	269	2.208	24
16	A-(2016 & 3016)	STUDIO APARTMENT	ST1	40.21	433	24.98	269	2.208	24



KEY PLAN

Amenities

Children's play area

Multi-purpose court

Landscape gardens

Swimming pool

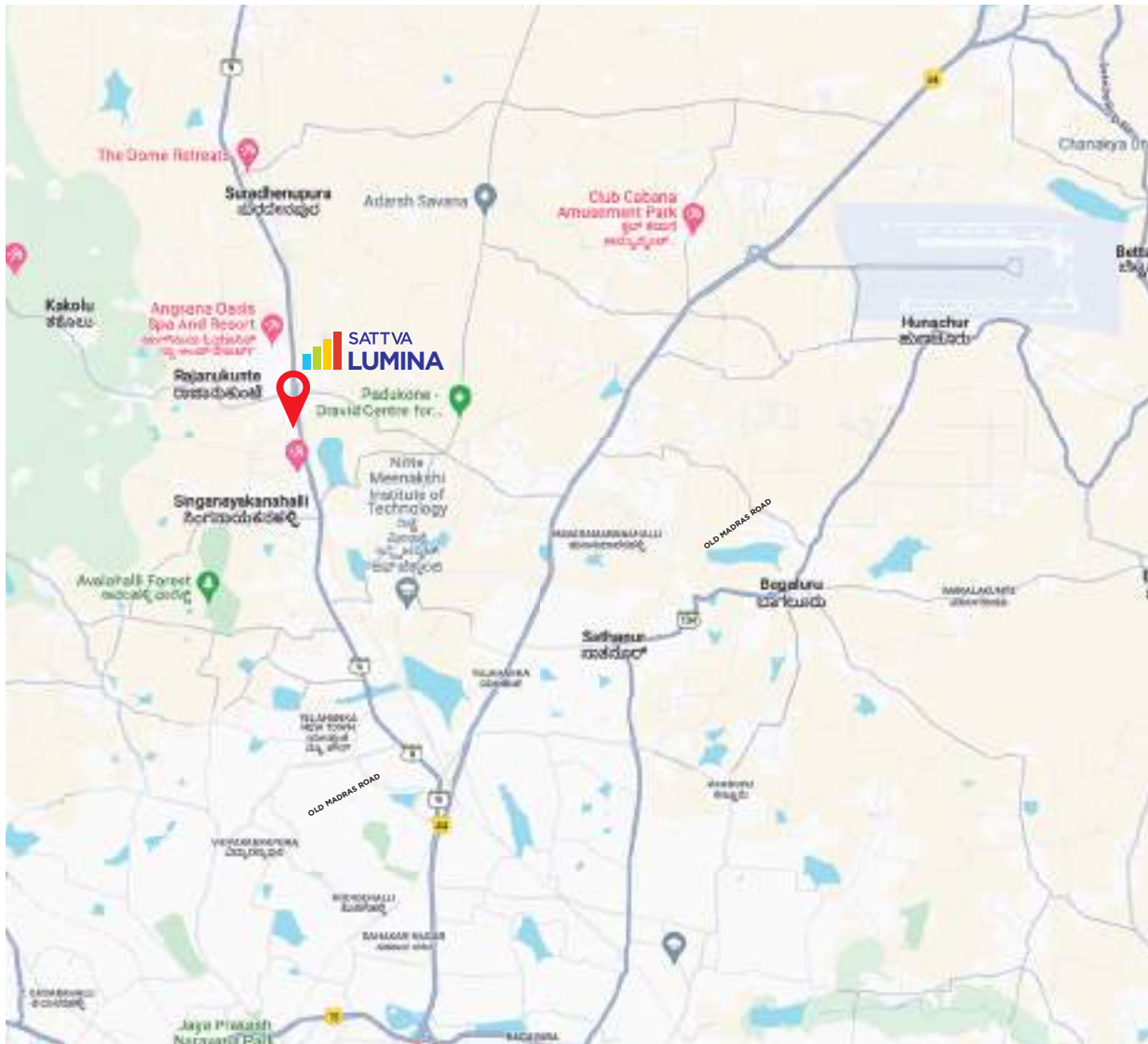
Outdoor gym

Clubhouse

Specifications

AREA	FLOORING	WALL	CEILING	DOOR AND WINDOWS	ELECTRICAL SWITCHES	SANITARYWARE & CP
LIVING ROOM/DINING	VITRIFIED TILE DC	WALL PUTTY WITH INTERIOR EMULSION	OBD	DOOR FRAME :RCC SHUTTER:FLUSH DOOR FINISHED WITH VENEER ONE SIDE AND PAINT ON THE OTHER WINDOWS/GLAZING:UPVC WITH OPENABLE & FIX COMBINATION	MODULAR SWITCHES AND COPPER WIRING	
MASTER BEDROOM	VITRIFIED TILE	WALL PUTTY WITH INTERIOR EMULSION	OBD	DOOR FRAME :RCC SHUTTER:FLUSH DOOR FINISHED WITH VENEER ONE SIDE AND PAINT ON THE OTHER WINDOWS/GLAZING:UPVC WITH OPENABLE & FIX COMBINATION	MODULAR SWITCHES AND COPPER WIRING	
OTHER BEDROOM	VITRIFIED TILE DC	WALL PUTTY WITH INTERIOR EMULSION	OBD	DOOR FRAME :RCC SHUTTER:FLUSH DOOR FINISHED WITH VENEER ONE SIDE AND PAINT ON THE OTHER WINDOWS/GLAZING:UPVC WITH OPENABLE & FIX COMBINATION	MODULAR SWITCHES AND COPPER WIRING	
KITCHEN	CERAMIC TILES	NA	OBD	DOOR FRAME :RCC WINDOWS/GLAZING:UPVC WINDOWS WITH OPENABLE & FIX COMBINATION	MODULAR SWITCHES AND COPPER WIRING	PLUMBING :HOT & COLD LINE PROVISIONS
TOILETS	CERAMIC TILES	CERAMIC TILES UPTO 7FT HEIGHT/False ceiling	OBD	DOOR FRAME : RCC FRAME SHUTTER:FLUSH DOOR FINISHED WITH VENEER ONE SIDE AND PAINT ON THE OTHER FIXED LOUVERS WITH EXHAUST FOR TOILET VENTILATORS	MODULAR SWITCHES AND COPPER WIRING	WALL MOUNTED EWC WITH FLUSH VALVES AND CP FITTINGS.GRANITE COUNTERS IN ALL TOILETS
UTILITY	CERAMIC TILES	WALL PUTTY WITH INTERIOR EMULSION	OBD		MODULAR SWITCHES AND COPPER WIRING	INLET AND OUTLET FOR WASHING MACHINE
BALCONY	CERAMIC TILES	PAINTED TO MATCH THE EXTERIOR ELEVATION	PAINT WITH LIGHTS INSTALLED	UPVC SLIDING WITH FULL GLAZING RAILING : MS RAILING DESIGNED TO MATCH EXTERIOR		
INTERIOR						
AREA	CEILING	LIFT FASCIA	WALLS	MAIN STAIRS	SERVICE STAIRS	
GROUND FLOOR LOBBY	POP WITH FALSE CEILING	TILES	VITRIFIED TILES & PAINT COMBINATION			
TYPICAL LOBBY	CAL SILICATE/POP CEILING	TILES	VITRIFIED TILES & PAINT COMBINATION			
STAIRS				RESTILE	RESTILE	
ADDITIONAL FACILITY	INTERCOM SYSTEM	SECURITY SYSTEM	POWER BACKUP	LIFT		
	APARTMENT TO APARTMENT & ALL SERVICE AREAS	CCTV CAMERA SURVEILLANCE IN THE LOBBY/SECURITY ROOM/PERIPHERAL VITAL LOCATIONS	100% POWER BACK-UP FOR ALL AREAS	AUTOMATIC PASSENGER LIFTS		

Location Map



DISTANCE INDICATOR

Vishwa Vidyapeeth Takshashila	- 350 meter
Rajanakunte Railway station	- 1 km
Chiguru Hospital	- 500 meter
Sai Vidya Institute of Technology	- 1.6 km
Just Cricket Academy & Ground	- 3.1 km
Presidency University	- 3.9 km
Mall of Asia	- 12 km
The Galleria Mall	- 9.5 km
D Mart	- 14.2 km
Bengaluru International Airport	- 21 km
Padukone Dravid Centre for Sports Excellence	- 6 km

Developed & Marketed by



Corporate Office: Sattva Group, Sattva Windsor, No.3, Ulsoor Road, Bengaluru - 560042, Karnataka, India.

Tel: +91 80 42699000 Fax: +91 80 42699011

Bengaluru • Hyderabad • Mumbai • Pune • Chennai • Kolkata • Goa • Coimbatore

Call Toll Free: 1800 121 3344 | www.sattvagroup.com



A Credit 'A' STABLE RATED COMPANY
Founding Member IGBC



An ICRA 'A' STABLE RATED COMPANY
ISO 9001, 14001 & 18001 CERTIFIED

In association with

